

8X8 39H 4-PACK

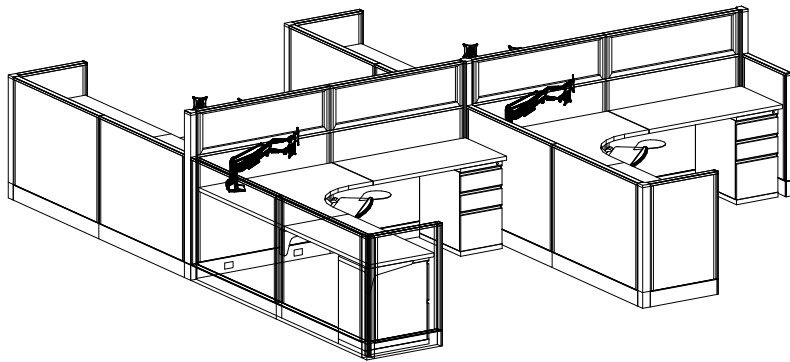
RAZOR SYSTEM TYPICAL



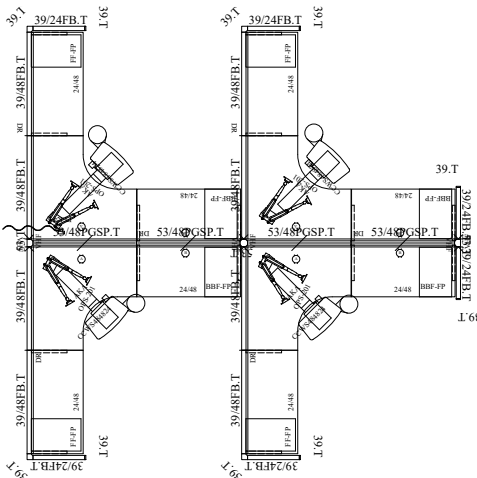
3D RENDERING

STATION SPECIFICATIONS

- Razor System
- 8' x 8' Four Pack
- 53 & 39H Panel Heights
- Base Feed power
- BBF-FP & FF-FP storage pedestals
- OPS-201 Dual Monitor arms
- Keyboard Trays

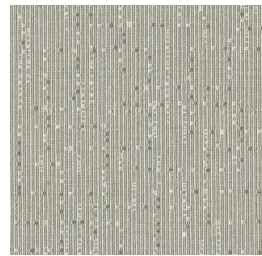


3D PLAN LAYOUT



2D PLAN LAYOUT

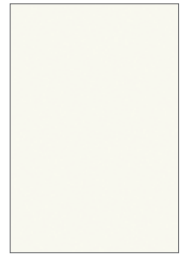
FINISHES



BANTER
Sterling



SURFACE & EDGE
Buka Buka



PAINT
WF

PRICING

See next page for full BOM.

\$45,404.00 LIST TOTAL

\$11,351.00 PRICE PER STATION

Typical pricing is for reference only.
Pricing must be confirmed via official
Price Book or Customer Service.

8X8 39H 4-PACK

RAZOR SYSTEM TYPICAL



PRICING

Part Number	Part Description	Qty	List	Ext List
PGSF5348P-3914.T	53 (39-14) x 48 Fabric Stack Glass Panel - Powered - Thin Base	4	\$2,215.00	\$8,860.00
F3948.T	39 X 48 FABRIC PANEL - THIN BASE	8	\$895.00	\$7,160.00
F3924.T	39 X 24 FABRIC PANEL - THIN BASE	6	\$655.00	\$3,930.00
CCWS484824	48 X 48 X 24 CURVILINEAR CORNER WORK SURFACE	4	\$905.00	\$3,620.00
WS2448	24 X 48 WORK SURFACE	8	\$555.00	\$4,440.00
BBF-FP	BOX/BOX/FILE PEDESTAL FULL PULL 23"D W/O TOP	4	\$1,089.00	\$4,356.00
FF-FP	FILE/FILE PEDESTAL FULL PULL 23"D W/OUT TOP	4	\$1,089.00	\$4,356.00
PEK4 (L OR R)	4 CIR. BASE POWER ENTRY KIT	1	\$709.00	\$709.00
REC/A.T	A CIRCUIT DUPLEX RECEPTACLE - THIN BASE	4	\$60.00	\$240.00
REC/B.T	B CIRCUIT DUPLEX RECEPTACLE - THIN BASE	4	\$60.00	\$240.00
OPS-201-BUDGET	DUAL MONITOR ARM W/ SLIM CLAMP/GR MOUNT	4	\$489.00	\$1,956.00
AKAVALUE	VALUE KEYBOARD SET- INCLUDES 21" TRACK ARM & 20" TRAY, WRIST REST & MOUSE TRAY	4	\$629.00	\$2,516.00
4WY53A2.T	53" 4 WAY CONNECTOR - THIN BASE	1	\$469.00	\$469.00
VHF	VARIABLE HEIGHT FILLER - PANEL TO CONNECTOR	6	\$42.00	\$252.00
PTP48	48" PANEL TO PANEL CONNECTOR	2	\$42.00	\$84.00
3WY53A2.T	53" 3 WAY CONNECTOR - THIN BASE	2	\$375.00	\$750.00
PTP34	34" PANEL TO PANEL CONNECTOR	4	\$38.00	\$152.00
2WY39A2.T	39" 2 WAY CONNECTOR - THIN BASE	4	\$189.00	\$756.00
EC39A2.T	39" END CAP W/ THIN BASE	6	\$93.00	\$558.00

\$45,404.⁰⁰ LIST TOTAL

\$11,351.⁰⁰ PRICE PER STATION

Typical pricing is for reference only.
Pricing must be confirmed via official
Price Book or Customer Service.