

# 6X9 70H

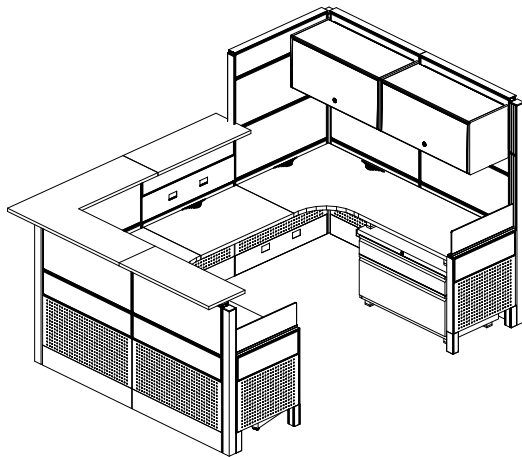
## EVO 2.5 SYSTEM TYPICAL



**3D RENDERING**

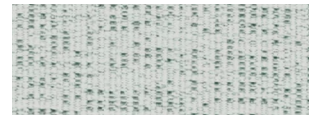
### STATION SPECIFICATIONS

- Evo 2.5 System
- 6' x 9'
- 70" maximum panel height
- Base feed power
- Beltline power
- Fabric Tackable Acoustic tiles
- Metal Perforated Air Flow tiles
- Metal Beltline tiles
- Metal Base tiles
- Frameless glass top dividers
- Metal overhead storage bin
- 2-drawer low storage
- Mobile BF-FP storage pedestal



**3D PLAN LAYOUT**

### FINISHES



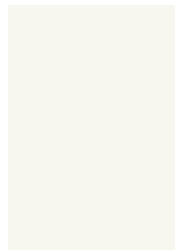
**PANEL FABRIC**  
Marin Sea Glass



**ACCENT FABRIC**  
Chase Moss



**SURFACE & EDGE**  
White Cypress



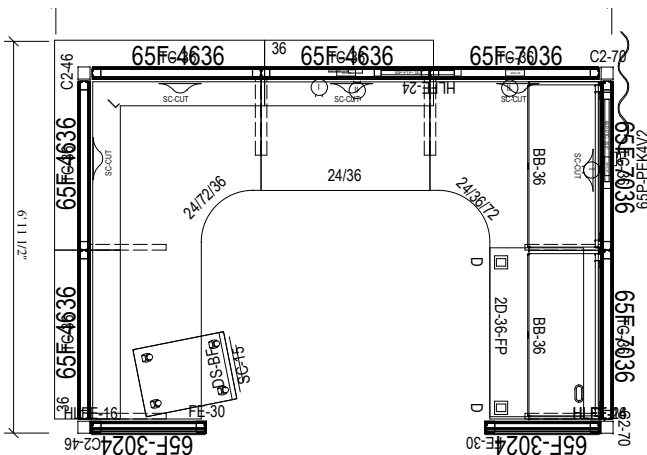
**PAINT**  
WF

### PRICING

See next page for full BOM.

**\$30,601.00 LIST TOTAL**

Typical pricing is for reference only. Pricing must be confirmed via official Price Book or Customer Service.



**2D PLAN LAYOUT**

# 6X9 70H

## EVO 2.5 SYSTEM TYPICAL



### PRICING

Part Number	Part Description	Qty	List	Ext List
65AFT-1624	16"H X 24"W Perf Air Flow Tile	4	\$93.00	\$372.00
65AFT-1636	16"H X 36"W Perf Air Flow Tile	14	\$119.00	\$1,666.00
65BB-36	36"W Overhead Binder Bin	2	\$1,219.00	\$2,438.00
65BC-36	36"W Base Cover (Blank)	11	\$71.00	\$781.00
65BCE-36	36"W Base Cover w/Knockout	3	\$82.00	\$246.00
65C2-46	46"H 2-Way 90 Deg Conn Post	2	\$179.00	\$358.00
65C2-70	70"H 2-Way 90 Deg Conn Post	2	\$275.00	\$550.00
65F-3024	30"H X 24" W Frame	2	\$339.00	\$678.00
65F-4636	46"H X 36"W Frame	4	\$525.00	\$2,100.00
65F-7036	70"H X 36"W Frame	3	\$645.00	\$1,935.00
65FE-30	30"H Finished End	2	\$48.00	\$96.00
65FGA-24-8H.F	8"H X 24"W Frameless	2	\$275.00	\$550.00
65HLFE-16	Hi/Lo Finished End - 16"H	2	\$38.00	\$76.00
65HLFE-24	Hi/Lo Finished End -24"H	2	\$42.00	\$84.00
65P-BL-ML	49" Base Line to Belt Line Festoon	1	\$235.00	\$235.00
65P-PEK4V2	4 Cir Base Power Entry	1	\$719.00	\$719.00
65P-PTC	20.5" Power Festoon - Connector	1	\$115.00	\$115.00
65P-PTP	18.5" Power Festoon Panel to Panel	1	\$119.00	\$119.00
65P-PWR36V1	36" Power Harness-V1	3	\$285.00	\$855.00
65P-R-I	Rec Circuit 1	2	\$54.00	\$108.00
65P-R-II	Rec Circuit 2	2	\$54.00	\$108.00
65PMT-0836	8"H X 36"W MID POS METAL TILE W/ELEC KNOCKOUT	1	\$75.00	\$75.00
65TA-0824	8"H X 24"W TACK ACOUSTIC TILE	4	\$129.00	\$516.00
65TA-0836	8"H X 36"W TACK ACOUSTIC TILE	20	\$159.00	\$3,180.00
65TA-0836	8"H X 36"W Tack Acoustic Tile	1	\$159.00	\$159.00
65TA-1636	16"H X 36"W Tack Acoustic Tile	19	\$159.00	\$3,021.00
65TC-36	36"W Top Cap	7	\$54.00	\$378.00
65TF-SRC	Side Rail Cover Tile - Pair	4	\$65.00	\$260.00
CC36	36" Counter Cap	2	\$295.00	\$590.00
CCC4444SQ	44 7/8 X 44 7/8 Sq Crnr Cap- 36W Panels	1	\$719.00	\$719.00
DOCKLEG	3"H Docking Leg w/Adj Glide for Desking	2	\$75.00	\$150.00
DS-2D-36-FP-M	36"W x 20"D x 24"H Low Storage, 2 Drawer, FP	1	\$2,819.00	\$2,819.00
DS-BF-FP-M	Low Metal Mobile Box/File- Full Pull	1	\$1,249.00	\$1,249.00
DS-SC15	14.6"W SEAT CUSHION FOR DESKING B/F PEDESTAL	1	\$189.00	\$189.00
65-ECCWS362472L	36 X 24 X 72 CURVILINEAR CORNER SURFACE - LFT EXT	1	\$1,309.00	\$1,309.00
ECCWS362472R	36 X 24 X 72 CURVILINEAR CORNER SURFACE - RT EXT	1	\$1,309.00	\$1,309.00
WS2436	24 X 36 WORK SURFACE	1	\$489.00	\$489.00

**\$30,601.<sup>00</sup> LIST TOTAL**

Typical pricing is for reference only.  
Pricing must be confirmed via official  
Price Book or Customer Service.