

# 30X60 53H 6-PACK

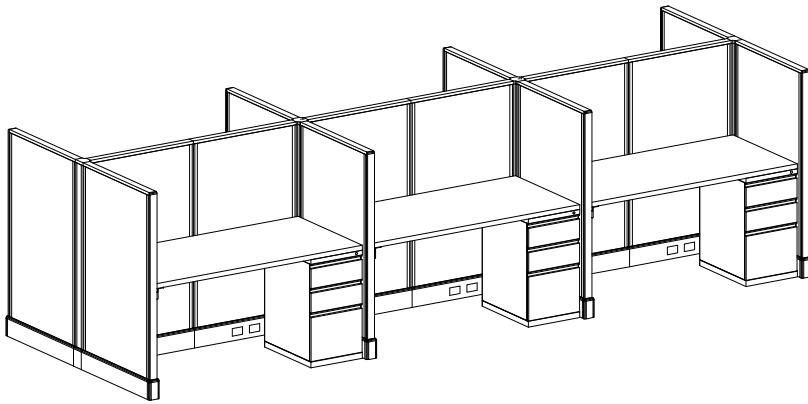
## OPS2 PANEL SYSTEM TYPICAL



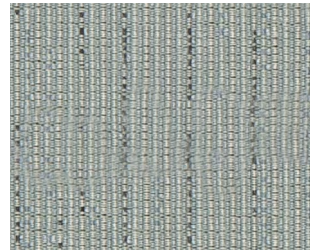
### STATION SPECIFICATIONS

- OPS2 Panel System
- Monolithic panels
- 30" x 60" - 6-Pack
- 53" panel height
- Base feed power
- 2 power REC/station
- Power down the spine
- BBF-FP-21 storage pedestal

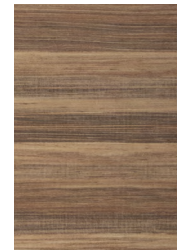
### 3D RENDERING



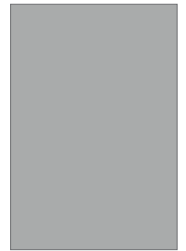
### FINISHES



**FABRIC**  
Axis Chambray



**SURFACE & EDGE**  
Buka Bark



**PAINT**  
MS

### PRICING

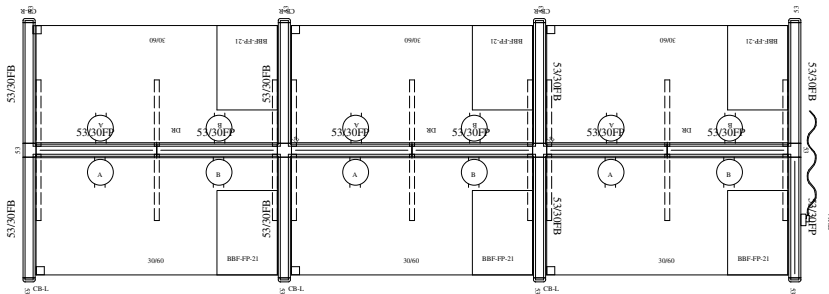
See next page for full BOM.

**\$29,425.<sup>00</sup> LIST TOTAL**

**\$4,904.<sup>17</sup> PRICE PER STATION**

Typical pricing is for reference only.  
Pricing must be confirmed via official  
Price Book or Customer Service.

### 3D PLAN LAYOUT



### 2D PLAN LAYOUT

# 30X60 53H 6-PACK

## OPS2 PANEL SYSTEM TYPICAL



### PRICING

Part Number	Part Description	Qty	List	Ext List
3WY53A2	53" - 3 WAY CONNECTOR	2	\$375.00	\$750.00
4WY53A2	53" - 4 WAY CONNECTOR	2	\$469.00	\$938.00
BBF-FP-21	BOX/BOX/FILE PEDESTAL FULL PULL 21"D W/OUT TOP	6	\$989.00	\$5,934.00
CRNRBR- LEFT	CORNER BRACKET (SPEC L OR R)	3	\$16.00	\$48.00
CRNRBR- RIGHT	CORNER BRACKET (SPEC L OR R)	3	\$16.00	\$48.00
EC53A2	53" END CAP	8	\$97.00	\$776.00
F5330	53 X 30 FABRIC PANEL - W/BASE	7	\$809.00	\$5,663.00
F5330P	53 X 30 FABRIC PANEL - POWERED	7	\$1,209.00	\$8,463.00
PEK4 (L OR R)	4 CIR. BASE POWER ENTRY KIT	1	\$709.00	\$709.00
PTP48	48" PANEL TO PANEL CONNECTOR	3	\$42.00	\$126.00
REC/A	A CIRCUIT DUPLEX RECEPTACLES	6	\$60.00	\$360.00
REC/B	B CIRCUIT DUPLEX RECEPTACLES	6	\$60.00	\$360.00
WS3060	30 X 60 WORK SURFACE	6	\$875.00	\$5,250.00

**\$29,425.<sup>00</sup> LIST TOTAL**

**\$4,904.<sup>17</sup> PRICE PER STATION**

Typical pricing is for reference only.  
Pricing must be confirmed via official  
Price Book or Customer Service.