

120 DEGREE 7-6X8 2-PACK

OPS2 TILE SYSTEM TYPICAL



3D RENDERING

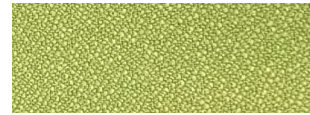
STATION SPECIFICATIONS

- OPS2 Tile System
- 2-Pack
- 39", 53" panel heights
- 7'-6" x 8' (panels only)
- BBF-FP storage pedestal
- FF-FP storage pedestal
- Pencil drawer
- Base feed power
- 2 REC/Station
- Power down spine

FINISHES



PANEL FABRIC Anchrage Goldenrod



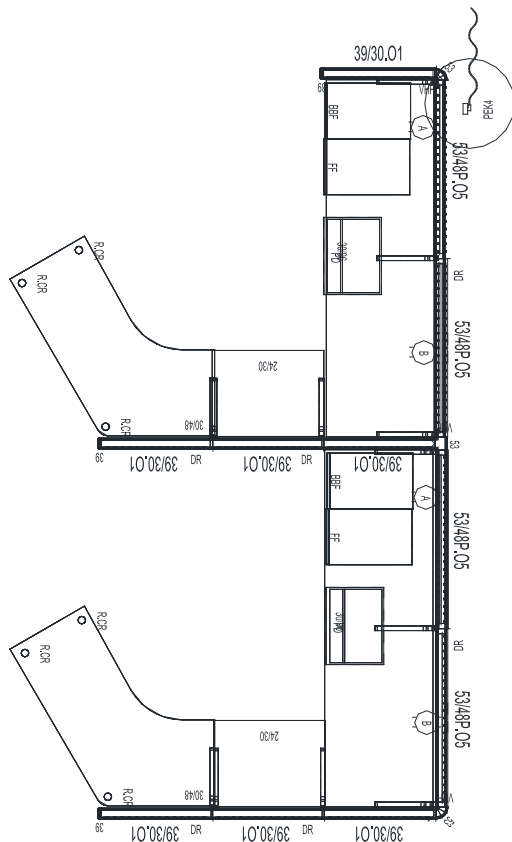
ACCENT FABRIC Paradise Summer Lime



PAINT & EDGE
MT



WORK SURFACE
Folkstone Grey



2D PLAN LAYOUT

PRICING

See next page for full BOM.

\$33,328.00 LIST TOTAL

\$16,664.00 PRICE PER STATION

Typical pricing is for reference only.
Pricing must be confirmed via official
Price Book or Customer Service.

120 DEGREE 7-6X8 2-PACK

OPS2 TILE SYSTEM TYPICAL



PRICING

Part Number	Part Description	Qty	List	Ext List
2WY53A2	53" - 2 WAY CONNECTOR	2	\$215.00	\$430.00
3WY53A2	53" - 3 WAY CONNECTOR	1	\$375.00	\$375.00
BBF-FP	BOX/BOX/FILE PEDESTAL FULL PULL 23"D W/O TOP	2	\$1,089.00	\$2,178.00
CRNRBR- RIGHT	CORNER BRACKET (SPEC L OR R)	2	\$16.00	\$32.00
EC39A2	39" END CAP	3	\$93.00	\$279.00
ERCWS3048.120.90	30X48X24 120Deg, Right Ext W/90Deg Ends Corner Ws	2	\$1,169.00	\$2,338.00
FF-FP	FILE/FILE PEDESTAL FULL PULL 23"D W/OUT TOP	2	\$1,089.00	\$2,178.00
PDN	PENCIL DRAWER	2	\$159.00	\$318.00
PEK4 (L OR R)	4 CIR. BASE POWER ENTRY KIT	1	\$709.00	\$709.00
PTP34	34" PANEL TO PANEL CONNECTOR	4	\$38.00	\$152.00
PTP48	48" PANEL TO PANEL CONNECTOR	2	\$42.00	\$84.00
R.CR	2" POST LEG	6	\$339.00	\$2,034.00
REC/A	A CIRCUIT DUPLEX RECEPTACLES	2	\$60.00	\$120.00
REC/B	B CIRCUIT DUPLEX RECEPTACLES	2	\$60.00	\$120.00
TS39301877.01	Non-Powered Tile Frame 3930.18PP.7F.7F	7	\$1,189.00	\$8,323.00
TSS348P181414.05	Powered Tile Frame 5348P.18PP.14F.14G/OT	4	\$2,519.00	\$10,076.00
VHF	VARIABLE HEIGHT FILLER - PANEL TO CONNECTOR	3	\$42.00	\$126.00
WS2430	24 X 30 WORK SURFACE	2	\$419.00	\$838.00
WS3096	30 X 96 WORK SURFACE	2	\$1,309.00	\$2,618.00

\$33,328.00 LIST TOTAL

\$16,664.00 PRICE PER STATION

Typical pricing is for reference only.
Pricing must be confirmed via official
Price Book or Customer Service.