

24mm PET Board Surface Mounted Desk Screen Divider

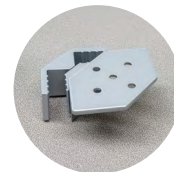
The below 2-screen application requires DSH-L Brackets. DSH-L includes (2) corner brackets, (1) surface bracket, (2) clamp brackets.



1x Surface Bracket



2x Corner Brackets



2x Clamp Brackets

Features

- Screen options: 24mm PET Board (sold separately)
- Screen hardware has silver finish
- Adds screen height above and below a work surface
- Secured by clamp mounts underneath work surface
- Provides (2) or (3) sided enclosure to station

DSH-L (2-sided)



DSH-LU (3-sided)



SKU	DESCRIPTION
DSH-L	2 SCREEN L BRACKET COMBO - SILVER

Note: Includes (2) corner brackets, (1) surface bracket, (2) clamp brackets. 24mm PET board required.

SKU	DESCRIPTION
DSH-LU	3 SCREEN U BRACKET COMBO - SILVER

Note: Includes (4) corner brackets, (2) surface brackets, (2) clamp brackets. 24mm PET board required.