

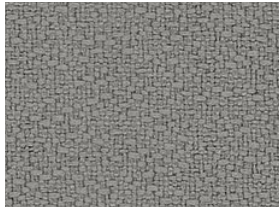
PANEL FABRICS SIGNATURE GRADE 2

NOTE: As digitally printed images, colors may vary from physical samples.
To request a sample of a finish shown on this card, please email samples@openplan.com.

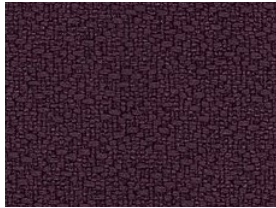


ANCHORAGE 2335

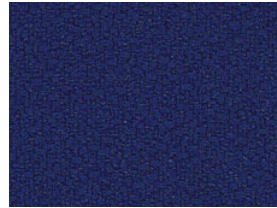
Additional Colors Available



Asteroid 2053



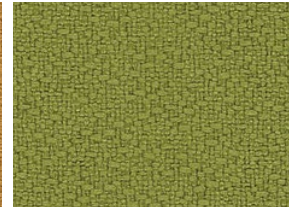
Aubergine 2036



Cobalt 2045



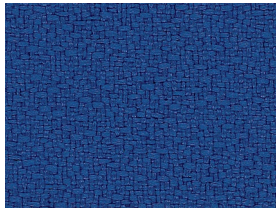
Goldenrod 2090



Green Apple 2087



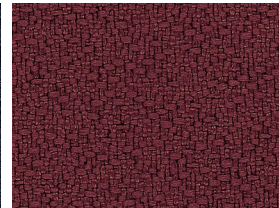
Lemon 2839



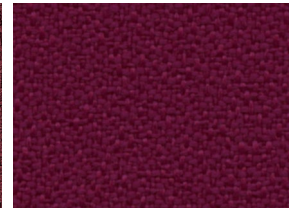
Lapis 2094



Midnight 2025



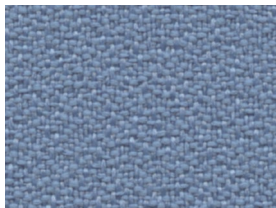
Mulberry 2044



Orchid 2843



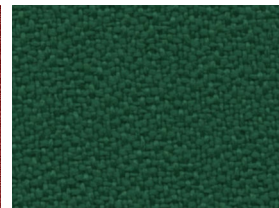
Onyx 2016



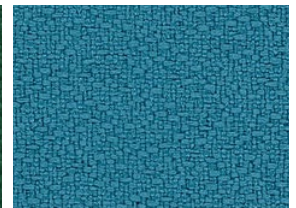
Pool 2842



Poppy 2091



Turquoise 2841

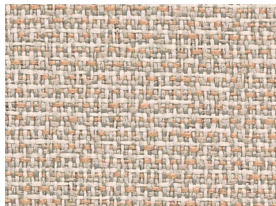


Waterfall 2691

BAILEY 2299



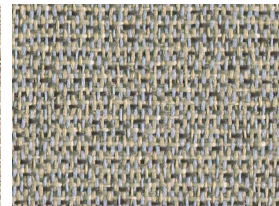
Allagash Mist 7040



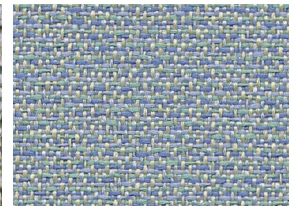
Baxter Beige 7011



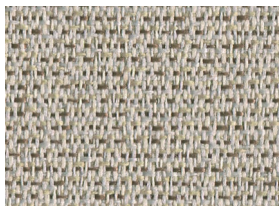
Belmont Silver 7010



Cave 7047



Kennebec Blue 7041



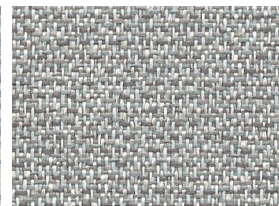
Khaki 7012



Paris Frost 7020



Platinum 7013



Sherman Pewter 7024

PANEL FABRICS SIGNATURE GRADE 2


To request a sample of a fabric shown on this card, please email samples@openplan.com.




Style	Anchorage 2335	Bailey 2299
Content	35% Post-Consumer Recycled Polyester 65% Pre-Consumer Recycled Polyester	100% Pre-Consumer Recycled Polyester
Weight	15.0 ± 1.0 oz / lin yd	8.3 ± 0.5 oz / lin yd
Width	66"	66"
Repeat	None	None
Treatment	None	Polyester Binder
Care		
Cleaning Code	W-S	W-S
Cleaning Suggestions	Clean with water based cleaning agents, foam or pure, water free solvents. Vacuuming or light brushing is recommended to prevent dust and soil buildup.	Clean with water based cleaning agents, foam or pure, water free solvents. Vacuuming or light brushing is recommended to prevent dust and soil buildup.
Performance		
Breaking Strength (ASTM D5034)	Warp: 275.0 lbf min. Fill: 275.0 lbf min.	Warp: 150.0 lbf min. Fill: 100.0 lbf min.
Tear Strength (ASTM D2261)	Warp: 35.0 lbf min. Fill: 35.0 lbf min.	Warp: 15.0 lbf min. Fill: 15.0 lbf min.
Colorfastness to Light (AATCC 16 Option 3)	40 hrs. Grade 4 min.	40 hrs. Grade 4 min.
Colorfastness to Crocking (AATCC 8)	4.0 min. Dry 3.0 min. Wet	4.0 min. Dry 3.0 min. Wet
Flammability		
ASTM E-84	Class A or I	Class A or I

Every effort has been made to ensure color accuracy of the digital images, however, please order a sample before specification. Colors may vary between dye lots. These are directional fabrics. Application testing of these products is recommended.

Proudly woven in North America supporting our local communities.

 This pattern is included in the underwriters laboratory panel fabric recognition program. Additional testing of this U.L. recognized fabric is not required on approved panels from participating manufacturers.

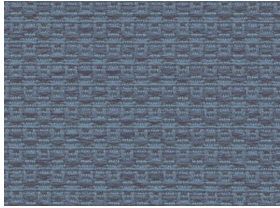
 Terratex is a registered trademark of Duvaltex and designates fabrics that are made from 100% recycled or compostable material using increasingly sustainable manufacturing practices to produce a high quality product that is recyclable at the end of its useful life.

 **Guilford of Maine**

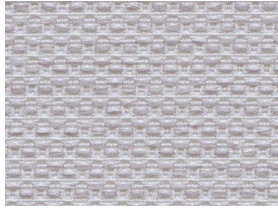
PANEL FABRICS SIGNATURE GRADE 2

NOTE: As digitally printed images, colors may vary from physical samples.
To request a sample of a finish shown on this card, please email samples@openplan.com.

CHASE 2138



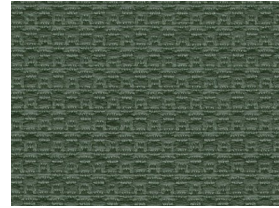
Chambray 1249



Coin 1243



Ecru 1241



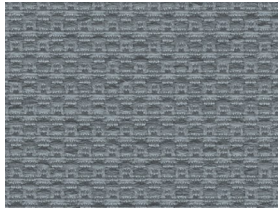
Moss 1250



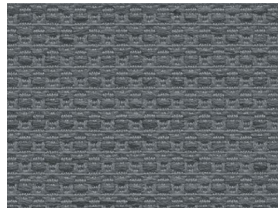
Mushroom 1245



Ochre 1251



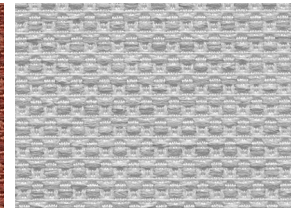
Pewter 1247



Pumice 1248



Red Clay 1252



Shadow 1246

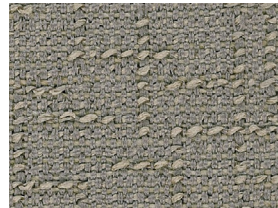
CROSSTOWN 2526



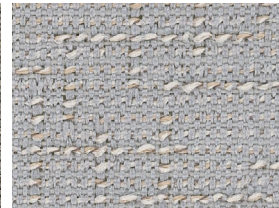
Birch 031



Buff 080



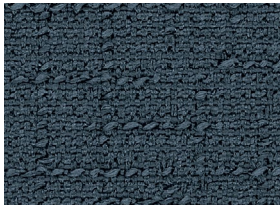
Cement 010



Fieldstone 060



Graphite 021



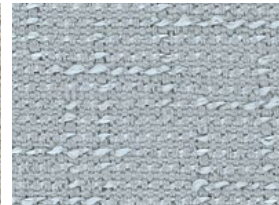
Mystic 020



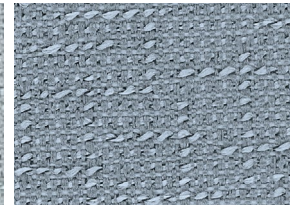
Ray 030



Stucco 070



Sterling 061

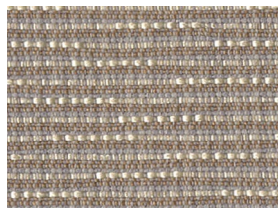


Waterfront 040

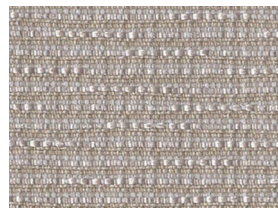
DASHING 1204



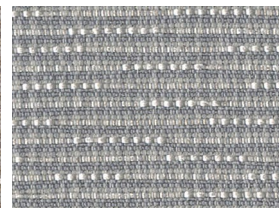
Antique Sage 1045



Bespoke Tan 1046



Classic Silver 1041



Dapper Grey 1047



Genteel Beige 1043



Polished Slate 1044



Refined Marble 1042

PANEL FABRICS SIGNATURE GRADE 2


To request a sample of a fabric shown on this card, please email samples@openplan.com.




Style	Chase 2138	Crosstown 2526	Dashing 1204
Content	26% Post-Consumer Recycled Polyester 74% Pre-Consumer Recycled Polyester	23% Post-Consumer Recycled Polyester 77% Pre-Consumer Recycled Polyester	92% Post-Consumer Recycled Polyester 8% Pre-Consumer Recycled Polyester
Weight	13.3 ± 1.0 oz / lin yd	13.6 ± 1.0 oz / lin yd	10.9 ± 1.0 oz / lin yd
Width	66"	66"	66"
Repeat	None	12.5" Vertical, 16.2" Horizontal	2" Vertical, 2.4" Horizontal
Treatment	Polyester binder	None	None
Care			
Cleaning Code	W-S	W-S	W-S
Cleaning Suggestions	Clean with water based cleaning agents, foam or pure, water free solvents. Vacuuming or light brushing is recommended to prevent dust and soil buildup.	Clean with water based cleaning agents, foam or pure, water free solvents. Vacuuming or light brushing is recommended to prevent dust and soil buildup.	Clean with water based cleaning agents, foam or pure, water free solvents. Vacuuming or light brushing is recommended to prevent dust and soil buildup.
Performance			
Breaking Strength (ASTM D5034)	Warp: 280.0 lbf min. Fill: 200.0 lbf min.	Warp: 250.0 lbf min. Fill: 150.0 lbf min.	Warp: 240.0 lbf min. Fill: 190.0 lbf min.
Tear Strength (ASTM D2261)	Not tested	Warp: 35.0 lbf min. Fill: 25.0 lbf min.	Warp: 25.0 lbf min. Fill: 40.0 lbf min.
Colorfastness to Light (AATCC 16 Option 3)	40 hrs. Grade 4 min.	40 hrs. Grade 4 min.	40 hrs. Grade 4 min.
Colorfastness to Crocking (AATCC 8)	4.0 min. Dry 3.0 min. Wet	4.0 min. Dry 3.0 min. Wet	4.0 min. Dry 3.0 min. Wet
Flammability			
ASTM E-84	Class A or I	Class A or I	Class A or I

Every effort has been made to ensure color accuracy of the digital images, however, please order a sample before specification. Colors may vary between dye lots. These are directional fabrics. Application testing of these products is recommended.

Proudly woven in North America supporting our local communities.

 This pattern is included in the underwriters laboratory panel fabric recognition program. Additional testing of this U.L. recognized fabric is not required on approved panels from participating manufacturers.

 Terratex is a registered trademark of Duvaltex and designates fabrics that are made from 100% recycled or compostable material using increasingly sustainable manufacturing practices to produce a high quality product that is recyclable at the end of its useful life.

 **Guilford of Maine**

PANEL FABRICS SIGNATURE GRADE 2

NOTE: As digitally printed images, colors may vary from physical samples.
To request a sample of a finish shown on this card, please email samples@openplan.com.

FR701 2100

Additional Colors Available



Baltic 153



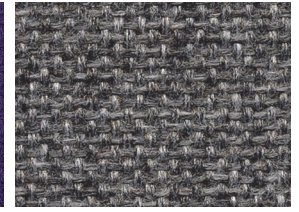
Crystal Blue 175



Eggshell 144



Iris 798



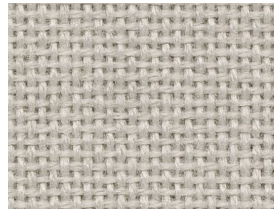
Medium Grey 298



Moleskin 796



Opal 394



Pearl 481



Quartz 380



Silver Papier 538



Sky 740



Steel Grey 471



Sunshine 797

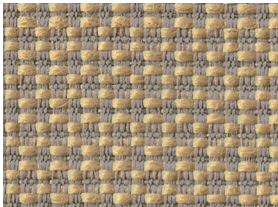


Teal 742



White 224

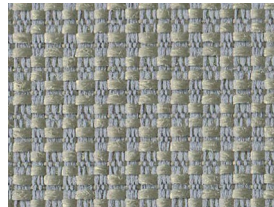
INTERMIX 3035



Butter Rum 7050



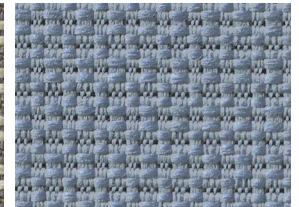
Coconut 7011



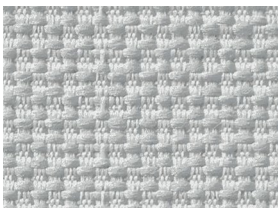
Foggy 7041



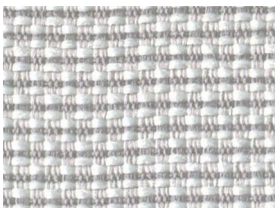
Husky 7060



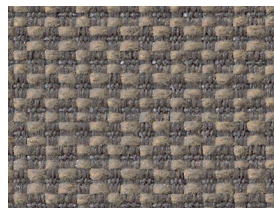
Neptune 7040



Rocket Ship 7010



Seagull 7030



Smokey Quartz 7061



Swan 7020

PANEL FABRICS SIGNATURE GRADE 2


To request a sample of a fabric shown on this card, please email samples@openplan.com.




Style	FR701® 2100	Intermix 3035
Content	100% Post-Consumer Recycled Polyester	100% Pre-Consumer Recycled Polyester
Weight	16.0 ± 0.5 oz / lin yd	15.3 ± 1.0 oz / lin yd
Width	66"	66"
Repeat	None	None
Treatment	None	Polyester binder
Care		
Cleaning Code	W-S	W-S
Cleaning Suggestions	Clean with water based cleaning agents, foam or pure, water free solvents. Vacuuming or light brushing is recommended to prevent dust and soil buildup.	Clean with water based cleaning agents, foam or pure, water free solvents. Vacuuming or light brushing is recommended to prevent dust and soil buildup.
Performance		
Breaking Strength (ASTM D5034)	Warp: 150.0 lbf min. Fill: 150.0 lbf min.	Warp: 225.0 lbf min. Fill: 225.0 lbf min.
Tear Strength (ASTM D2261)	Warp: 30.0 lbf min. Fill: 30.0 lbf min.	Not tested
Colorfastness to Light (AATCC 16 Option 3)	40 hrs. Grade 4 min.	40 hrs. Grade 4 min.
Colorfastness to Crocking (AATCC 8)	4.0 min. Dry 3.0 min. Wet	4.0 min. Dry 3.0 min. Wet
Flammability		
ASTM E-84	Class A or I	Class A or I

Every effort has been made to ensure color accuracy of the digital images, however, please order a sample before specification. Colors may vary between dye lots. These are directional fabrics. Application testing of these products is recommended.

Proudly woven in North America supporting our local communities.

 This pattern is included in the underwriters laboratory panel fabric recognition program. Additional testing of this U.L. recognized fabric is not required on approved panels from participating manufacturers.

 Terratex is a registered trademark of Duvaltex and designates fabrics that are made from 100% recycled or compostable material using increasingly sustainable manufacturing practices to produce a high quality product that is recyclable at the end of its useful life.

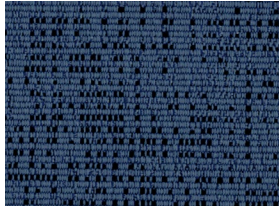
 **Guilford of Maine**

PANEL FABRICS SIGNATURE GRADE 2

NOTE: As digitally printed images, colors may vary from physical samples.
To request a sample of a finish shown on this card, please email samples@openplan.com.

MARIN 1300

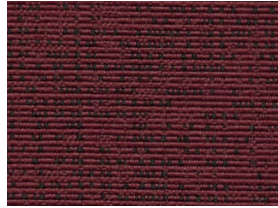
Additional Colors Available



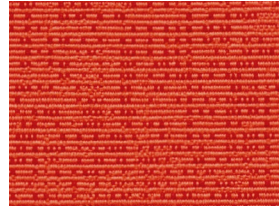
Benthic 1157



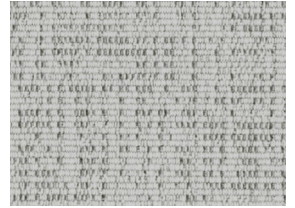
Blacktip 1149



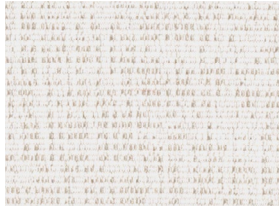
Carrageen 1150



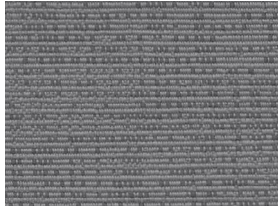
Clownfish 1152



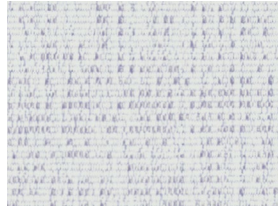
Dolphin 1147



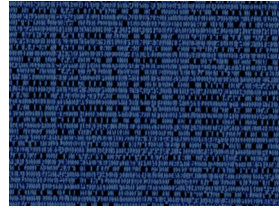
Great White 1143



Grey Whale 1148



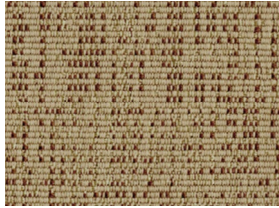
Ice Edge 1145



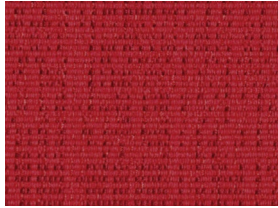
Intertidal 1156



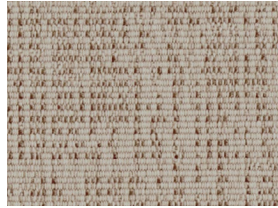
Mangrove 1154



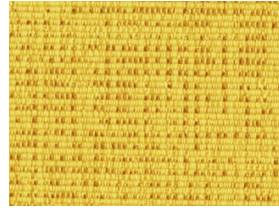
Pelican 1141



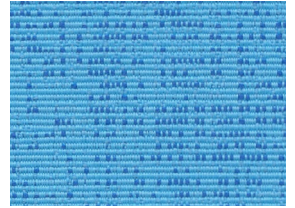
Red Snapper 1151



Sand 1142



Sunfish 1153



Swell 1155

REEDS 3078



Bisque 010



Greystone 020



Iron 030



Mink 050

PANEL FABRICS SIGNATURE GRADE 2

To request a sample of a fabric shown on this card, please email samples@openplan.com.



Style	Marin 1300	Reeds 3078
Content	90% Post-Consumer Recycled Polyester including ocean waste 10% Polyester	74% Post-Consumer Recycled Polyester 26% Pre-Consumer Recycled Polyester
Weight	12.5 ± 1.0 oz / lin yd	11.6 ± 1.0 oz / lin yd
Width	67"	66"
Repeat	19.1" Vertical, 12.76" Horizontal	12.5" Vertical, 16.9" Horizontal
Treatment	None	None
Care		
Cleaning Code	W-S	W-S
Cleaning Suggestions	Clean with water based cleaning agents, foam or pure, water free solvents. Vacuuming or light brushing is recommended to prevent dust and soil buildup. May also be disinfected with hydrogen peroxide, alcohol, and quaternary ammonium (quat) based cleaners.	Clean with water based cleaning agents, foam or pure, water free solvents. Vacuuming or light brushing is recommended to prevent dust and soil buildup.
Performance		
Breaking Strength (ASTM D5034)	Warp: 245.0 lbf min. Fill: 170.0 lbf min.	Warp: 250.0 lbf min. Fill: 150.0 lbf min.
Tear Strength (ASTM D2261)	Warp: 18.0 lbf min. Fill: 14.0 lbf min.	Warp: 20.0 lbf min. Fill: 20.0 lbf min.
Colorfastness to Light (AATCC 16 Option 3)	40 hrs. Grade 4 min.	40 hrs. Grade 4 min.
Colorfastness to Crocking (AATCC 8)	4.0 min. Dry 3.0 min. Wet	4.0 min. Dry 3.0 min. Wet
Flammability		
ASTM E-84	Class A or I	Class A or I

Every effort has been made to ensure color accuracy of the digital images, however, please order a sample before specification. Colors may vary between dye lots. These are directional fabrics. Application testing of these products is recommended.

Proudly woven in North America supporting our local communities.



This pattern is included in the underwriters laboratory panel fabric recognition program. Additional testing of this U.L. recognized fabric is not required on approved panels from participating manufacturers.



Terratex is a registered trademark of Duvaltex and designates fabrics that are made from 100% recycled or compostable material using increasingly sustainable manufacturing practices to produce a high quality product that is recyclable at the end of its useful life.



Guilford of Maine

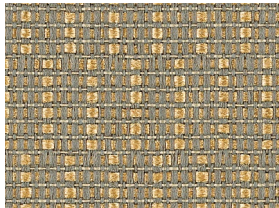
PANEL FABRICS SIGNATURE GRADE 2

NOTE: As digitally printed images, colors may vary from physical samples.
To request a sample of a finish shown on this card, please email samples@openplan.com.

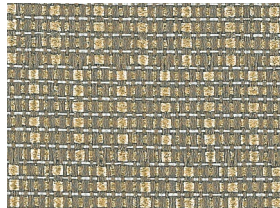
SPRITE 2671



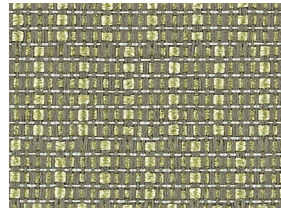
Butter 7020



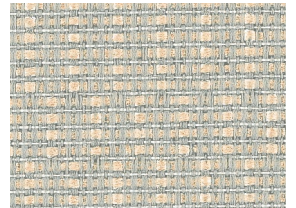
Harvest 7032



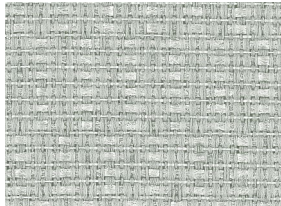
Khaki 7030



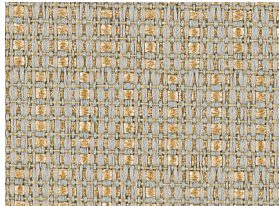
Kiwi 7031



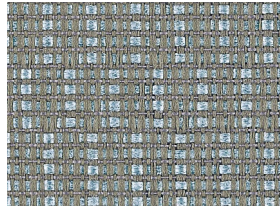
Linen 7010



Powder 7011



Sherbert 7012

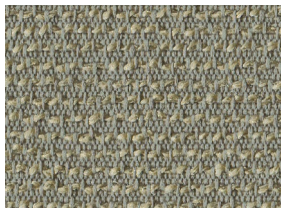


Sky 7033

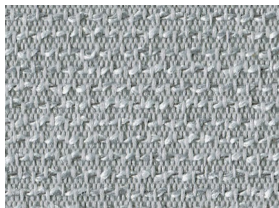


Snow 7040

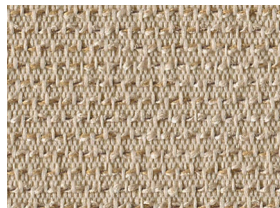
STRATA 2968



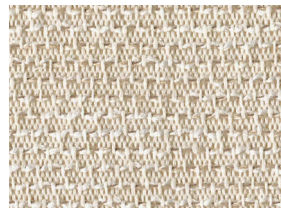
Cement 060



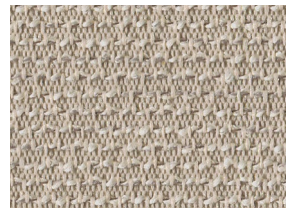
Cloud 040



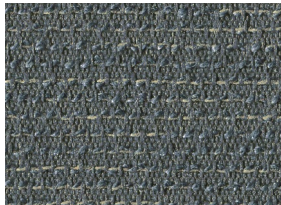
Latte 031



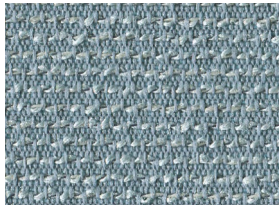
Linen 010



Sand 030



Sea 070



Sky 050



Straw 020

PANEL FABRICS SIGNATURE GRADE 2

To request a sample of a fabric shown on this card, please email samples@openplan.com.



Style	Sprite 2671	Strata 2968
Content	5% Post-Consumer Recycled Polyester 95% Pre-Consumer Recycled Polyester	100% Pre-Consumer Recycled Polyester
Weight	10.8 ± 0.5 oz / lin yd	11.8 ± 1.0 oz / lin yd
Width	66"	66"
Repeat	.83" Vertical, .26" Horizontal	.1" Vertical, None Horizontal
Treatment	Polyester Binder	None
Care		
Cleaning Code	W-S	W-S
Cleaning Suggestions	Clean with water based cleaning agents, foam or pure, water free solvents. Vacuuming or light brushing is recommended to prevent dust and soil buildup.	Clean with water based cleaning agents, foam or pure, water free solvents. Vacuuming or light brushing is recommended to prevent dust and soil buildup.
Performance		
Breaking Strength (ASTM D5034)	Warp: 175.0 lbf min. Fill: 175.0 lbf min.	Warp: 200.0 lbf min. Fill: 100.0 lbf min.
Tear Strength (ASTM D2261)	Warp: 35.0 lbf min. Fill: 25.0 lbf min.	Warp: 20.0 lbf min. Fill: 20.0 lbf min.
Colorfastness to Light (AATCC 16 Option 3)	40 hrs. Grade 4 min.	40 hrs. Grade 4 min.
Colorfastness to Crocking (AATCC 8)	4.0 min. Dry 3.0 min. Wet	4.0 min. Dry 3.0 min. Wet
Flammability		
ASTM E-84	Class A or I	Class A or I

Every effort has been made to ensure color accuracy of the digital images, however, please order a sample before specification. Colors may vary between dye lots. These are directional fabrics. Application testing of these products is recommended.

Proudly woven in North America supporting our local communities.



This pattern is included in the underwriters laboratory panel fabric recognition program. Additional testing of this U.L. recognized fabric is not required on approved panels from participating manufacturers.



Terratex is a registered trademark of Duvaltex and designates fabrics that are made from 100% recycled or compostable material using increasingly sustainable manufacturing practices to produce a high quality product that is recyclable at the end of its useful life.



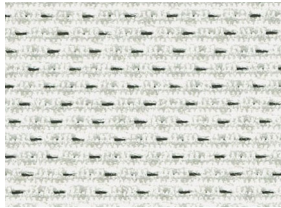
Guilford of Maine

PANEL FABRICS SIGNATURE GRADE 2

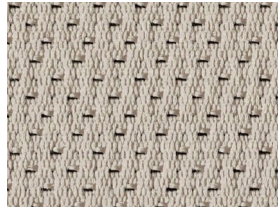
NOTE: As digitally printed images, colors may vary from physical samples.
To request a sample of a finish shown on this card, please email samples@openplan.com.

TWEED 2737

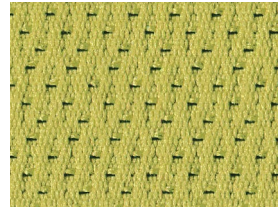
Additional Colors Available



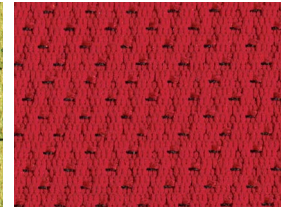
Bleach White 2766



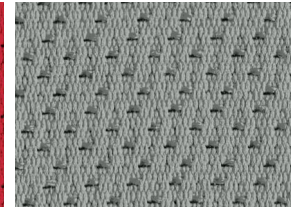
Concrete 2144



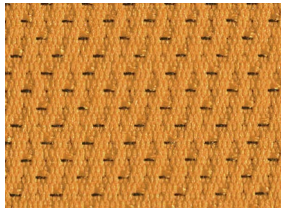
Leaf 2772



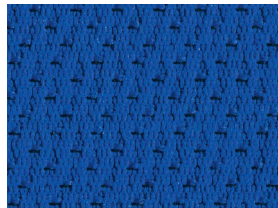
Lipstick 2770



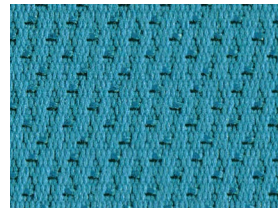
Metal 2193



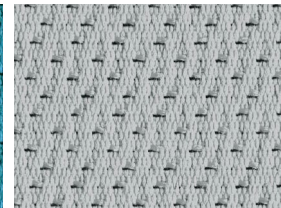
Orange 2767



Royal Blue 2771



Spa 2773



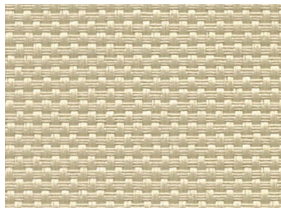
Stainless 2195



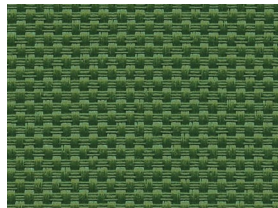
Wheat 2187

WHISPER 1240

Additional Colors Available



Ambience 1278



Baffle 1292



Chant 1295



Cloud 1288



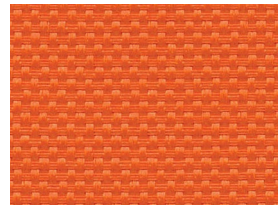
Dim 1276



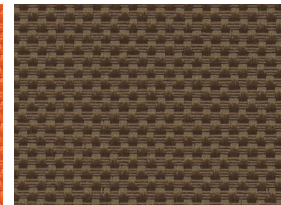
Hush 1281



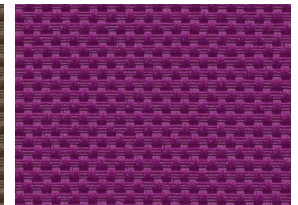
Lull 1289



Mellow 1293



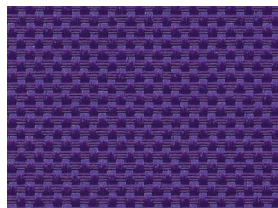
Muffle 1287



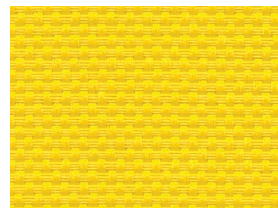
Mum 1297



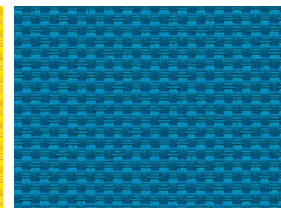
Mute 1284



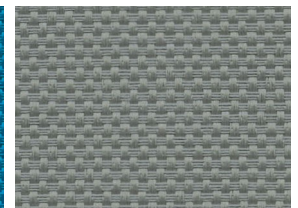
Mystery 1299



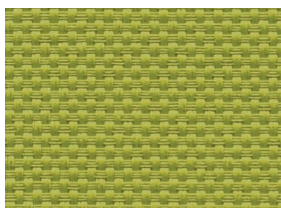
Peep 1291



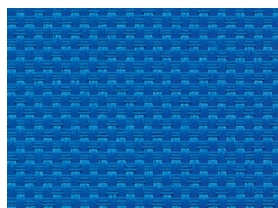
Placid 1294



Quiet 1286



Reverse 1290



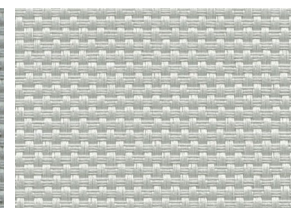
Secret 1296



Spirit 8888



Stillness 1283



Tranquility 1280

PANEL FABRICS SIGNATURE GRADE 2

To request a sample of a fabric shown on this card, please email samples@openplan.com.



Style	Tweed 2737	Whisper 1240
Content	25% Post-Consumer Recycled Polyester 75% Pre-Consumer Recycled Polyester	53% Post-Consumer Recycled Polyester 47% Polyester
Weight	11.7 ± 1.0 oz / lin yd	10.9 ± 1.0 oz / lin yd
Width	66"	66"
Repeat	None	None
Treatment	None	None
Care		
Cleaning Code	W-S	W-S
Cleaning Suggestions	Clean with water based cleaning agents, foam or pure, water free solvents. Vacuuming or light brushing is recommended to prevent dust and soil buildup.	Clean with water based cleaning agents, foam or pure, water free solvents. Vacuuming or light brushing is recommended to prevent dust and soil buildup.
Performance		
Breaking Strength (ASTM D5034)	Warp: 225.0 lbf min. Fill: 175.0 lbf min.	Warp: 270.0 lbf min. Fill: 150.0 lbf min.
Tear Strength (ASTM D2261)	Warp: 30.0 lbf min. Fill: 35.0 lbf min.	Warp: 30.0 lbf min. Fill: 20.0 lbf min.
Colorfastness to Light (AATCC 16 Option 3)	40 hrs. Grade 4 min.	40 hrs. Grade 4 min.
Colorfastness to Crocking (AATCC 8)	4.0 min. Dry 3.0 min. Wet	4.0 min. Dry 3.0 min. Wet
Flammability		
ASTM E-84	Class A or I	Class A or I

Every effort has been made to ensure color accuracy of the digital images, however, please order a sample before specification. Colors may vary between dye lots. These are directional fabrics. Application testing of these products is recommended.

Proudly woven in North America supporting our local communities.



This pattern is included in the underwriters laboratory panel fabric recognition program. Additional testing of this U.L. recognized fabric is not required on approved panels from participating manufacturers.



Terratex is a registered trademark of Duvaltex and designates fabrics that are made from 100% recycled or compostable material using increasingly sustainable manufacturing practices to produce a high quality product that is recyclable at the end of its useful life.



Guilford of Maine

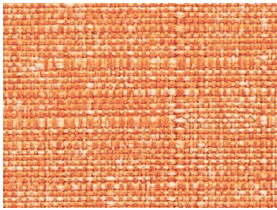
PANEL FABRICS SIGNATURE GRADE 2

NOTE: As digitally printed images, colors may vary from physical samples.
To request a sample of a finish shown on this card, please email samples@openplan.com.

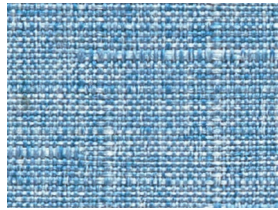


ACE

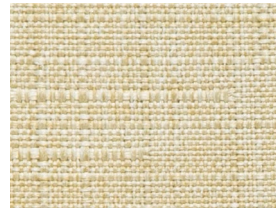
Additional Colors Available



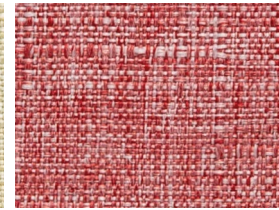
Apricot 1010531



Azure 1010524



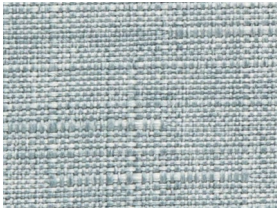
Biscotti 1010539



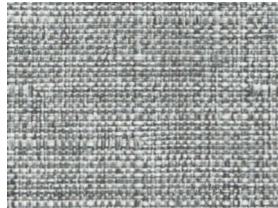
Chili 1010532



Dove 1010537



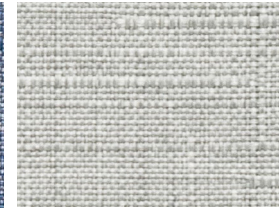
Drizzle 1010528



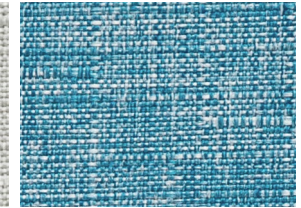
Falcon 1010535



Midnight 1010525

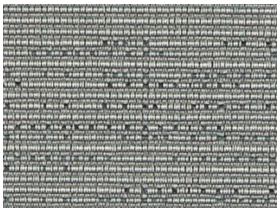


Platinum 1010536

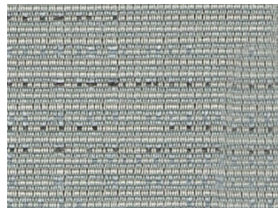


Surf 1010526

AXIS



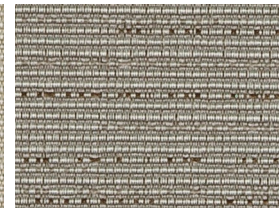
Bluestone 1009362



Chambray 1009361



Dune 1009359



Fossil 1009363

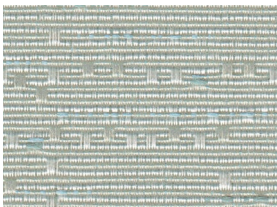


Sepia 1009364

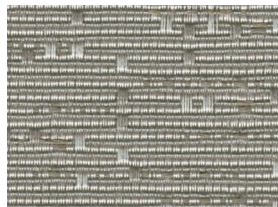


Silver 1009360

BANTER



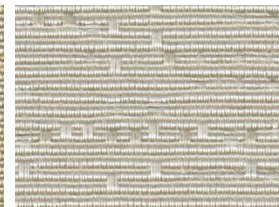
Crystal 1010615



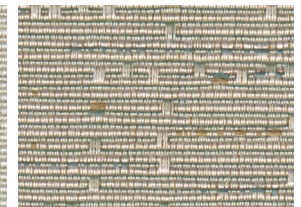
Greystone 1010617



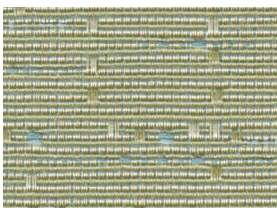
Honeycomb 1010612



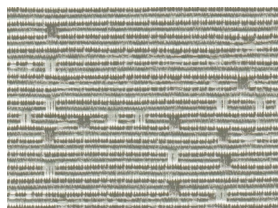
Pearl 1010610



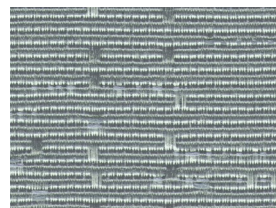
Sahara 1010611



Seaglass 1010613



Sterling 1010616



Topaz 1010614

PANEL FABRICS SIGNATURE GRADE 2


To request a sample of a fabric shown on this card, please email samples@openplan.com.




Style	Ace	Axis	Banter
Content	59% Post Consumer Recycled Polyester 41% Polyester	56% Post Industrial Recycled Polyester, 44% Post Consumer Recycled Polyester	35% Post Industrial Recycled Polyester 36% Post Consumer Recycled Polyester 29% Polyester
Weight	11.4 oz / lin yd	10 oz / lin yd	11.5 oz / lin yd
Width	66"	66"	66"
Repeat	None	None	35.172" V 17.125" H
Treatment	None	None	None
Care			
Cleaning Code	W-S	W-S	W-S
Cleaning Suggestions	Clean with water based cleaning agents, foam or pure, water free solvents. Vacuuming or light brushing is recommended to prevent dust and soil buildup.	Clean with water based cleaning agents, foam or pure, water free solvents. Vacuuming or light brushing is recommended to prevent dust and soil buildup.	Clean with water based cleaning agents, foam or pure, water free solvents. Vacuuming or light brushing is recommended to prevent dust and soil buildup.
Performance			
Breaking Strength (ASTM D5034)	Warp: 209.0 lbs. Fill: 236.0 lbs.	Warp: 61.0 lbs. Fill: 78.0 lbs.	Warp: 284.0 lbs. Fill: 142.0 lbs.
Tear Strength (ASTM D2261)	Warp: 18.5 lbs. Fill: 23.7 lbs.	Warp: 16 lbs. Fill: 23 lbs.	Warp: 27.0 lbs. Fill: 24.0 lbs.
Colorfastness to Light (AATCC 16 Option 3)	40 hrs. Class 4	40 hrs. Class 4	40 hrs. Class 4
Colorfastness to Crocking (AATCC 8)	4.0 Dry, 4.0 Wet	4.0 Dry, 3.0 Wet	4.0 Dry, 3.0 Wet
Flammability			
ASTM E-84	Class 1	Class A or 1	Class A or 1
Cal TB 117	Passed	Passed	Passed

Every effort has been made to ensure color accuracy of the digital images, however, please order a sample before specification. Colors may vary between dye lots. These are directional fabrics. Application testing of these products is recommended.

Proudly woven in North America supporting our local communities.

 Ace, Axis, and Banter are directional fabrics. Please use caution when cutting and applying.

 This pattern is included in the underwriters laboratory panel fabric recognition program. Additional testing of this U.L. recognized fabric is not required on approved panels from participating manufacturers.

Burch

PANEL FABRICS SIGNATURE GRADE 2

NOTE: As digitally printed images, colors may vary from physical samples.
To request a sample of a finish shown on this card, please email samples@openplan.com.

CENTURY

Also available in Grade 1 when combined with Grade 1 options and finishes



Amber 7177



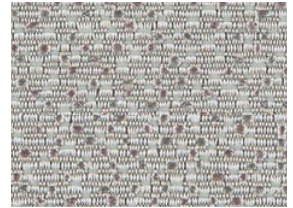
Aspen 7176



Atlantic 7180



Dew 7178

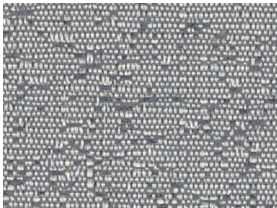


Fossil 7179



Limestone 7183

HINGE



Azure 1009376



Earl Grey 1009373



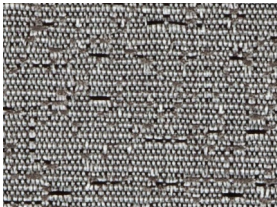
Ecru 1009372



Mink 1009374



Pearl 1009371



Shale 1009375

MIDWAY

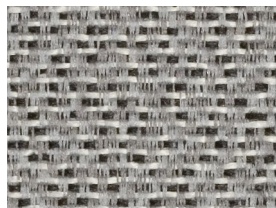
Also available in Grade 1 when combined with Grade 1 options and finishes



Almond 7238



Chambray 7244



Flint 7245



Haze 7246



Mineral 7237



Oasis 7243



Opal 7240



Rye 7241



Saddle 7242

PANEL FABRICS SIGNATURE GRADE 2


To request a sample of a fabric shown on this card, please email samples@openplan.com.




Style	Century	Hinge	Midway
Content	100% Polyester	43% Post Industrial Recycled Polyester 34% Polyester 23% Post Consumer Recycled Polyester	100% Polyester
Weight	12.6 oz / lin yd	11.5 oz / lin yd	10.65 oz / lin yd
Width	66"	66"	66"
Repeat	N/A	N/A	N/A
Treatment	None	None	None
Care			
Cleaning Code	W-S	W-S	W-S
Cleaning Suggestions	Clean with water based cleaning agents, foam or pure, water free solvents. Vacuuming or light brushing is recommended to prevent dust and soil buildup.	Clean with water based cleaning agents, foam or pure, water free solvents. Vacuuming or light brushing is recommended to prevent dust and soil buildup.	Clean with water based cleaning agents, foam or pure, water free solvents. Vacuuming or light brushing is recommended to prevent dust and soil buildup.
Performance			
Breaking Strength (ASTM D5034)	Warp: 249.0 lbs. Fill: 248.0 lbs.	Warp: 100.0 lbs. Fill: 115.0 lbs.	Warp: 212.0 lbs. Fill: 151.0 lbs.
Tear Strength (ASTM D2261)	Warp: 23.3 lbs. Fill: 30.2 lbs.	Warp: 28 lbs. Fill: 43 lbs.	Warp: 37.5 lbs. Fill: 61.3 lbs.
Colorfastness to Light (AATCC 16 Option 3)	40 hrs. Class 4.5	40 hrs. Class 4	40 hrs. Class 4
Colorfastness to Crocking (AATCC 8)	4.5 Dry, 5.0 Wet	4.0 Dry 3.0 Wet	4.5 Dry 4.5 Wet
Flammability			
ASTM E-84	Class A or 1	Class A or 1	Class A or 1
Cal TB 117	Passed	Passed	Passed

Every effort has been made to ensure color accuracy of the digital images, however, please order a sample before specification. Colors may vary between dye lots. These are directional fabrics. Application testing of these products is recommended.

Proudly woven in North America supporting our local communities.

 Century, Hinge, and Midway are directional fabrics. Please use caution when cutting and applying.

 This pattern is included in the underwriters laboratory panel fabric recognition program. Additional testing of this U.L. recognized fabric is not required on approved panels from participating manufacturers.

Burch

PANEL FABRICS SIGNATURE GRADE 2

NOTE: As digitally printed images, colors may vary from physical samples.
To request a sample of a finish shown on this card, please email samples@openplan.com.



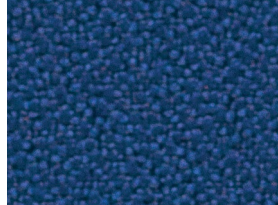
PRIME TIME

Select fabrics also available in Grade 1 when combined with Grade 1 options and finishes

Additional Colors Available



Academy 1012191



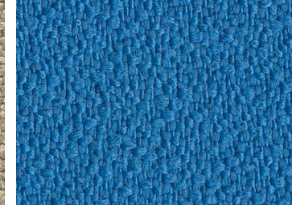
Azure 1010091



Chambray 1010094



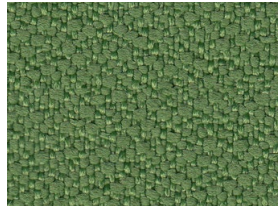
Chino 1010107



Cerulean 1012192



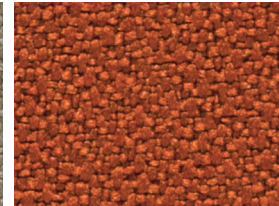
Elephant 1010102



Fairway 1012197



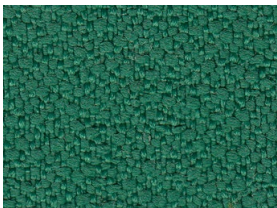
Mink 1010105



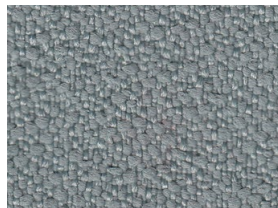
Paprika 1010084



Scarlet 1010086



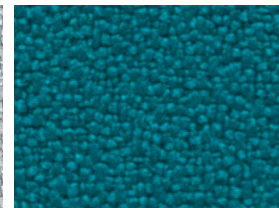
Shamrock 1012196



Shark 1012189



Silverado 1012188



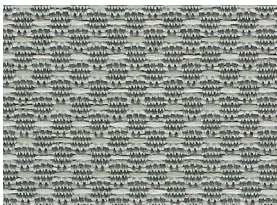
Tropic 1010093



Woodrose 1012200

TRACTION

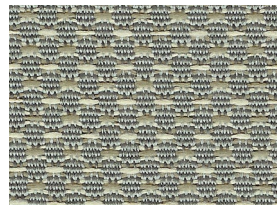
Also available in Grade 1 when combined with Grade 1 options and finishes



Chrome 7759



Earth 7757



Greystone 7758



Wheat 7756

UNISON



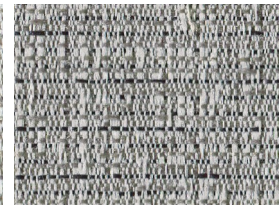
Ecru 7317



Flint 7314



Halo 7316



Haze 7315



Putty 7318



Suede 7313

PANEL FABRICS SIGNATURE GRADE 2

To request a sample of a fabric shown on this card, please email samples@openplan.com.



Style	Prime Time	Traction*	Unison
Content	100% Post Consumer Recycled Polyester	100% Polyester	50% Post Industrial Recycled Polyester 27% Post Consumer Recycled Polyester, 23% Polyester
Weight	15.0 oz / lin yd	11.7 oz / lin yd	10.8 oz / lin yd
Width	66"	66"	66"
Repeat	N/A	N/A	N/A
Treatment	None	None	None
Care			
Cleaning Code	W-S	W-S	W-S
Cleaning Suggestions	Clean with water based cleaning agents, foam or pure, water free solvents. Vacuuming or light brushing is recommended to prevent dust and soil buildup.	Clean with water based cleaning agents, foam or pure, water free solvents. Vacuuming or light brushing is recommended to prevent dust and soil buildup.	Clean with water based cleaning agents, foam or pure, water free solvents. Vacuuming or light brushing is recommended to prevent dust and soil buildup.
Performance			
Breaking Strength (ASTM D5034)	Warp: 325.0 lbs. Fill: 275.0 lbs.	Warp: 281.0 lbs. Fill: 181.0 lbs.	Warp: 227.0 lbs. Fill: 171.0 lbs.
Tear Strength (ASTM D2261)	Warp: 48.0 lbs. Fill: 53.0 lbs.	Warp: 29.7 lbs. Fill: 31.4 lbs.	Warp: 21.0 lbs. Fill: 41.0 lbs.
Colorfastness to Light (AATCC 16 Option 3)	40 hrs. Class 4.5	40 hrs. Class 5	40 hrs. Class 4
Colorfastness to Crocking (AATCC 8)	4.5 Dry, 4.5 Wet	5.0 Dry, 5.0 Wet	4.0 Dry, 3.0 Wet
Flammability			
ASTM E-84	Class A or 1	Class A or 1	Class A or 1
Cal TB 117	Passed	Passed	Passed

Every effort has been made to ensure color accuracy of the digital images, however, please order a sample before specification. Colors may vary between dye lots. These are directional fabrics. Application testing of these products is recommended.

Proudly woven in North America supporting our local communities.

* Traction is lightly backed



Prime Time, Traction, and Unison are a directional fabric. Please use caution when cutting and applying.



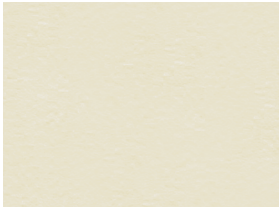






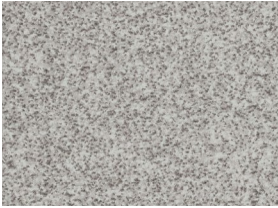








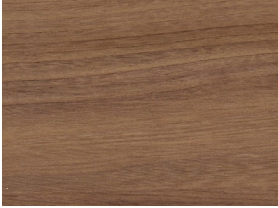
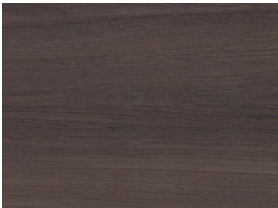

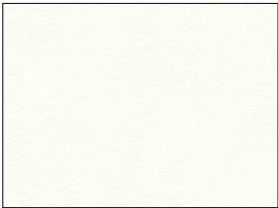

This pattern is included in the underwriters laboratory panel fabric recognition program. Additional testing of this U.L. recognized fabric is not required on approved panels from participating manufacturers.

Burch

WORK SURFACES SIGNATURE GRADE 2

NOTE: As digitally printed images, colors may vary from physical samples.
To request a sample of a finish shown on this card, please email samples@openplan.com.



WORK SURFACES					Standard - Low Pressure Laminates (LPL)
					
Antique White	NEW BU (G1/QS)	Buka Bark (+)	NEW Campania Elme (+)	Empire Mahogany (+)	
					
Fog	Folkstone Grey (G1/QS)	Grey Nebula	Hardrock Maple (G1+)	Henna Cherry (+)	
					
HF	LT	McKinley White (G1/QS)	Monticello Maple (+)	Satin Stainless	
					
Shadow Ridge (+)	NEW Tuscani Elme (+)	NEW Umbria Elme (+)	White Cypress (+)	White Frost	
					
White Nebula (G1/QS)					

(G1): Eligible for Signature Grade 1 Program when combined with Signature Grade 1 Program options and finishes.

(QS): Eligible for QuickShip when combined with QuickShip options and finishes.

(+): Work surface is grained

All work surfaces are eligible for the Signature Grade 2 Program.

2% LESS DISCOUNT FOR CUSTOM LAMINATES: Nevamar and Wilsonart (not Hi-Gloss), Arborite, Formica

4% LESS DISCOUNT FOR CUSTOM LAMINATES: Pionite- Wilsonart Hi-Gloss- 35 & 45 Finish and Wilsonart High Definition- 55 Finish

Minimum waste fees may apply.



OPS laminates and panel cores comply with the formaldehyde emission standards specified in US EPA TSCA Title VI (40 C.F.R. Par 770.10) and CARB ATCM 93120.2(A) Phase 2.

FINISHES SIGNATURE GRADE 2

NOTE: As digitally printed images, colors may vary from physical samples.
To request a sample of a finish shown on this card, please email samples@openplan.com.



EDGE BANDING



Antique White (G1)

Beige Pampas

BU (G1/QS)

Buka Bark

NEW Campania Elme



Desert Zephyr

Empire Mahogany

Folkstone Grey (G1/QS)

Hardrock Maple (G1)

Henna Cherry



HF (G1)

LT

MT (G1/QS)

Monticello Maple

Satin Stainless



Shadow Ridge

NEW Tuscani Elme

NEW Umbria Elme

White Cypress

White Frost (QS)

BASE/PAINT/TRIM



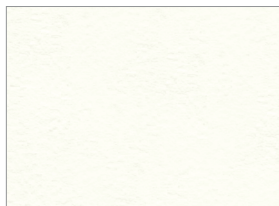
BU (G1/QS)

HF (G1)

LT

Metallic Silver

MT (G1/QS)



White Frost

All Edge, Base and Paint/Trim options are eligible for the Signature Grade 2 Program.

(G1): Eligible for Signature Grade 1 Program when combined with Signature Grade 1 Program options and finishes.
(QS): Eligible for QuickShip when combined with QuickShip options and finishes.

OPS PANEL FABRICS GRADE 1

NOTE: As digitally printed images, colors may vary from physical samples.
To request a sample of a finish shown on this card, please email samples@openplan.com.
"Coming Soon!" fabric samples are not yet available.



OPS Grade 1 Fabrics are import fabrics and subject to minor imperfections.

RICHMOND

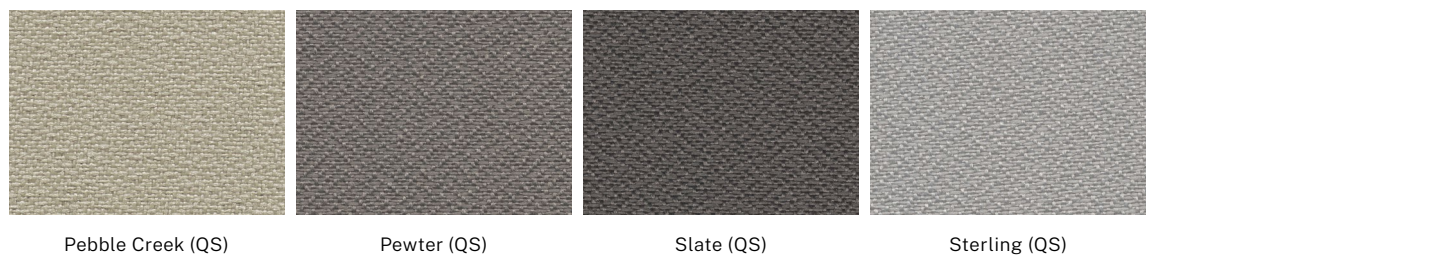


MIST



GLIDE

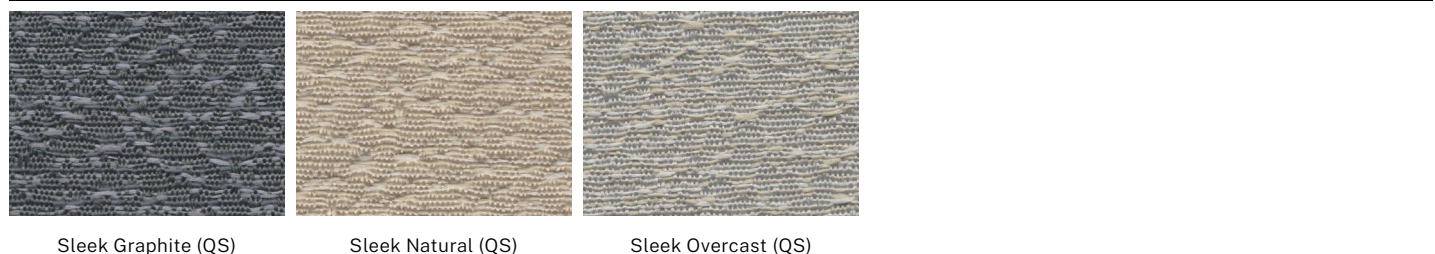
GLIDE CONTINUED



PASTURE



SLEEK



(QS): Eligible for QuickShip when combined with QuickShip options and finishes.

OPS PANEL FABRICS GRADE 1

NOTE: As digitally printed images, colors may vary from physical samples.

To request a sample of a finish shown on this card, please email samples@openplan.com.

"Coming Soon!" fabric samples are not yet available.

OPS Grade 1 Fabrics are import fabrics and subject to minor imperfections.



TERRACE

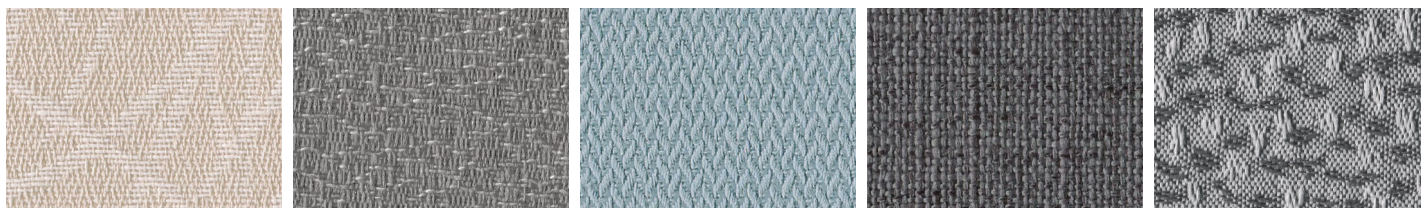


Terrace Cloud (QS)

Terrace Earth (QS)

Terrace Wave (QS)

WILD CARDS



Carytown (QS)

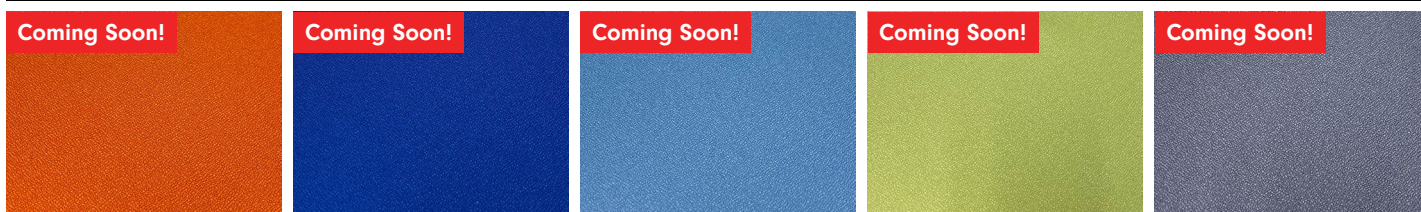
Drew Cove (QS)

Maymont (QS)

Smokey Pine (QS)

Surfside (QS)

PARADISE



Citrus Orange

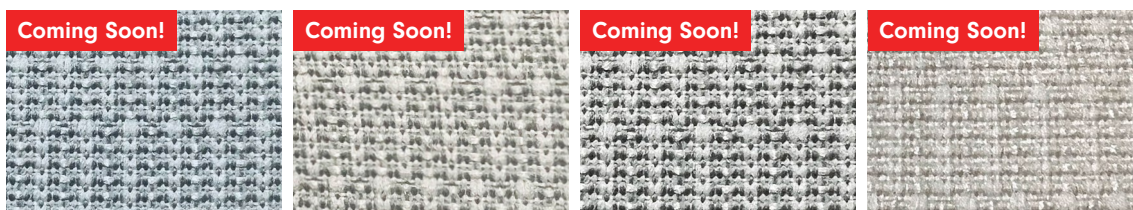
Illusion Blue

Pool Blue

Summer Lime

Volcanic Ash

SERENITY



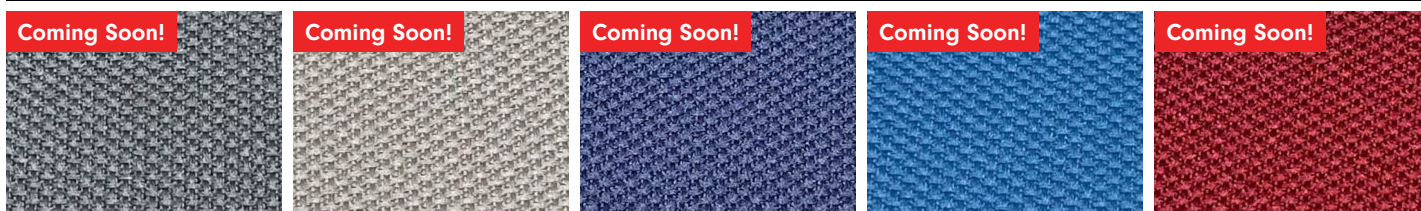
Arctic Denim

Ice

Lunar Grey

Oatmeal

WEAVE



Ash

Clay

Midnight

Ocean Breeze

Toasted Maroon

(QS): Eligible for QuickShip when combined with QuickShip options and finishes.

PANEL FABRICS SIGNATURE GRADE 1

BURCH FABRICS

NOTE: As digitally printed images, colors may vary from physical samples.
To request a sample of a finish shown on this card, please email samples@openplan.com.

CENTURY



Amber 7177



Aspen 7176



Atlantic 7180



Dew 7178



Fossil 7179



Limestone 7183

MIDWAY



Almond 7238



Chambray 7244



Flint 7245



Haze 7246



Mineral 7237



Oasis 7243



Opal 7240



Rye 7241



Saddle 7242

PRIME TIME Additional colors available in Grade 2



Marina 1010090



Spring 1010097

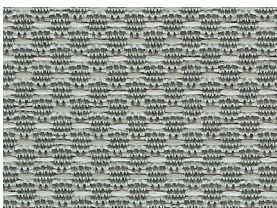


Sterling 1010106

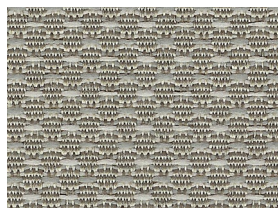


Tangerine 1010083

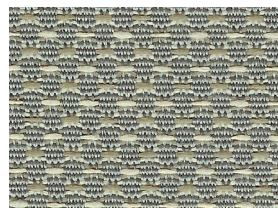
TRACTION



Chrome 7759



Earth 7757



Greystone 7758



Wheat 7756

PANEL FABRICS SIGNATURE GRADE 1

To request a sample of a fabric shown on this card, please email samples@openplan.com.




Style	Century	Midway	Prime Time	Traction
Content	100% Polyester	100% Polyester	100% Post Consumer Recycled Polyester	100% Polyester
Weight	12.6 oz / lin yd	10.65 oz / lin yd	15.0 oz / lin yd	11.7 oz / lin yd
Width	66"	66"	66"	66"
Repeat	N/A	N/A	N/A	N/A
Treatment	None	None	None	None
Care				
Cleaning Code	W-S	W-S	W-S	W-S
Cleaning Suggestions	Clean with water based cleaning agents, foam or pure, water free solvents. Vacuuming or light brushing is recommended to prevent dust and soil buildup.	Clean with water based cleaning agents, foam or pure, water free solvents. Vacuuming or light brushing is recommended to prevent dust and soil buildup.	Clean with water based cleaning agents, foam or pure, water free solvents. Vacuuming or light brushing is recommended to prevent dust and soil buildup.	Clean with water based cleaning agents, foam or pure, water free solvents. Vacuuming or light brushing is recommended to prevent dust and soil buildup.
Performance				
Breaking Strength (ASTM D5034)	Warp: 249.0 lbs. Fill: 248.0 lbs.	Warp: 212.0 lbs. Fill: 151.0 lbs.	Warp: 325.0 lbs. Fill: 275.0 lbs.	Warp: 281.0 lbs. Fill: 181.0 lbs.
Tear Strength (ASTM D2261)	Warp: 23.3 lbs. Fill: 30.2 lbs.	Warp: 37.5 lbs. Fill: 61.3 lbs.	Warp: 48.0 lbs. Fill: 53.0 lbs.	Warp: 29.7 lbs. Fill: 31.4 lbs.
Colorfastness to Light (AATCC 16 Option 3)	40 hrs. Class 4.5	40 hrs. Class 4	40 hrs. Class 4.5	40 hrs. Class 5
Colorfastness to Crocking (AATCC 8)	4.5 Dry, 5.0 Wet	4.5 Dry, 4.5 Wet	4.5 Dry, 4.5 Wet	5.0 Dry, 5.0 Wet
Flammability				
ASTM E-84	Class A or 1	Class A or 1	Class A or 1	Class A or 1
Cal TB 117	Passed	Passed	Passed	Passed

Every effort has been made to ensure color accuracy of the digital images, however, please order a sample before specification. Colors may vary between dye lots. These are directional fabrics. Application testing of these products is recommended.

Proudly woven in North America supporting our local communities.

 Century, Midway, Prime Time, and Traction are a directional fabric. Please use caution when cutting and applying.

 This pattern is included in the underwriters laboratory panel fabric recognition program. Additional testing of this U.L. recognized fabric is not required on approved panels from participating manufacturers.

Burch

FINISHES SIGNATURE GRADE 1

NOTE: As digitally printed images, colors may vary from physical samples.
To request a sample of a finish shown on this card, please email samples@openplan.com.



WORK SURFACES



NEW BU (QS)



Folkstone Grey (QS)



Hardrock Maple (+)

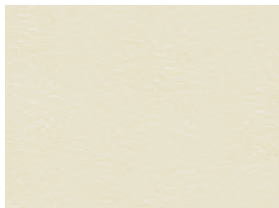


McKinley White (QS)



White Nebula (QS)

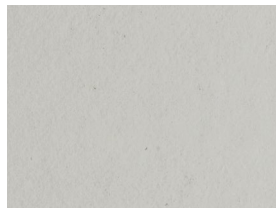
EDGE BANDING



Antique White



BU (QS)



Folkstone Grey (QS)



Hardrock Maple



HF



MT (QS)

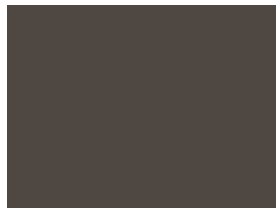
BASE & PAINT/TRIM



BU (QS)



HF



MT (QS)

(QS): Eligible for QuickShip when combined with QuickShip options and finishes.
(+): Work surface is grained.



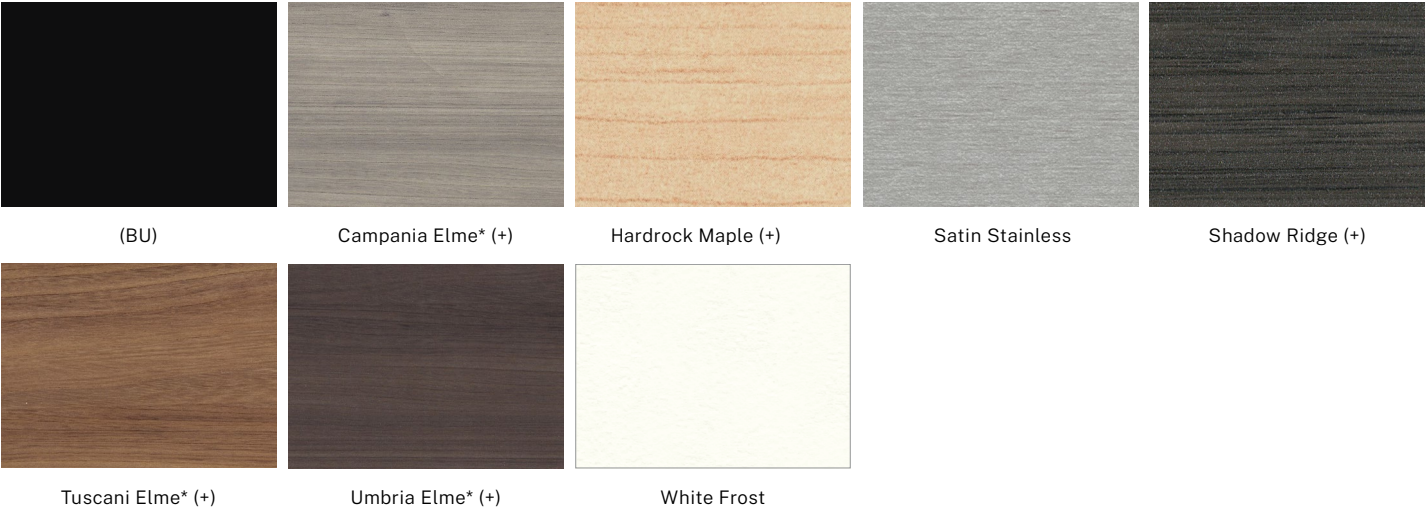
OPS laminates and panel cores comply with the formaldehyde emission standards specified in US EPA TSCA Title VI (40 C.F.R. Par 770.10) and CARB ATCM 93120.2(A) Phase 2.

LAMINATES ADDITIONAL OPTIONS

NOTE: As digitally printed images, colors may vary from physical samples.
To request a sample of a finish shown on this card, please email samples@openplan.com.



EVO 2.5 - LAMINATE TILES OPS2 PANEL SYSTEM (RAZOR & STANDARD BASE) - LAMINATE PANELS OPS2 TILE SYSTEM (RAZOR & STANDARD BASE) - LAMINATE TILES LAMINATE MDF SCREENS & DESK SCREEN DIVIDERS FREESTANDING SCREENS - LAMINATE PANELS



*Note: Contact customer service for lead time on Campania Elme, Tuscani Elme, and Umbria Elme laminate panels.

Standard laminate options shown (BU, Campania Elme, Hardrock Maple, Satin Stainless, Shadow Ridge, Tuscani Elme, Umbria Elme, White Frost) are available with the following criteria:

**Evo 2.5:
Laminate Tiles**

No additional charge. No custom laminate tile options available. Marker Board finish is applied via painted tile.

**OPS2 Panel System
(Razor & Standard Base):
Laminate Panels**

Available for 2% change in discount. All other laminate/ marker board options available for 4% change in discount. Custom laminate requests would need to be approved and priced by purchasing.

**OPS2 Tile System (Razor
& Standard Base):
Laminate Tiles**

Available at no additional charge. All other laminate/ marker board options available for \$10.00 per tile. Custom laminate requests would need to be approved and priced by purchasing.

**Laminate MDF Screens &
Desk Screen Dividers**

Available for 2% change in discount. All other laminate/ marker board options available for 4% change in discount. Custom laminate requests would need to be approved and priced by purchasing.

**Freestanding Screens:
Laminate Panels**

Available at no additional charge. No custom laminate options available.

(+): Laminate is grained.