

QUICK SHIP PROGRAM

Our Quick Ship Program offers you a quick turnaround with products produced in two weeks and shipped the third week based on shiplane. The Quick Ship Program now offers more finish options than ever before, with no panel width restrictions!

FABRICS (27)



Brown's Island



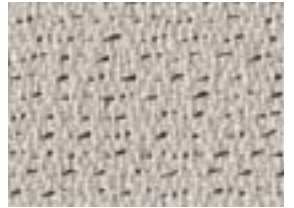
Canal Walk



Carytown



Cinder



Colonial Downs



Drew Cove



Grey Sky



James River



Maymont



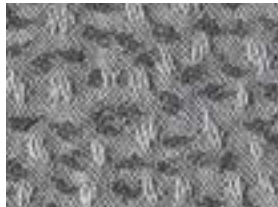
Pebble Creek



Sand



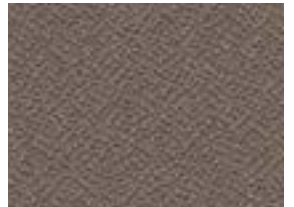
Smokey Pine



Surfside



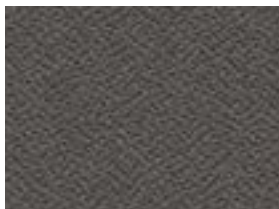
Glide Crema



Glide Java



Glide Pewter



Glide Slate



Glide Sterling



Pasture Brook



Pasture Gull



Pasture Wing



Sleek Graphite



Sleek Natural



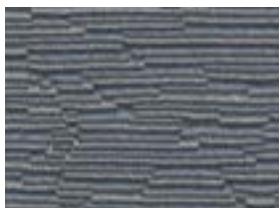
Sleek Overcast



Terrace Cloud



Terrace Earth



Terrace Wave

QUICK SHIP PROGRAM

WORK SURFACES (4)



BU



Folkstone Grey



Mckinley White



White Nebula

EDGE (4)



BU



Folkstone Grey



MT



WF

TRIM & BASE (2)



BU



MT

Colors shown are for representative purposes only. Actual swatches are available upon request. Quick Ship fabrics are import fabrics and subject to minor imperfections.

NOTES:

- Includes all fabric & acoustical panel heights and widths except for 62"h panels- available in all base styles (B1, B2 and Razor).
- Includes all Grade 1 and Grade 2 Adjustable Height Table Bases in all standard paint colors- tops available in four standard Quick Ship surface colors.
- Sixty-Five System, XPand System, OPS2 Tile System, Modular Walls, fabric tackable panels, full and partial glazed panels, 85h sliding door, custom glass door cutouts, fabric overheads, A-Style overheads, open panels and table tops are NOT included in the Quick Ship program.
- Grommet cuts are available.
- Custom surfaces and Electrical Access cutouts are NOT available.
- If a non- Quick Ship program item is added to the order, the entire order is assigned standard lead times. \$150,000 List Price limit on Quick Ship orders.
- All fabric and finish availability subject to change based on inventory.

TERMS & CONDITIONS:

- Orders are limited to \$150,000 list price or less.
- Orders will be produced in two weeks and shipped the third week based on ship lane.
- Once order is placed, revisions and cancellations are not applicable. Follow standard order approval process.
- Standard payment terms apply.
- Orders are for office systems only – individual components do not apply to Quick Ship Program.
- PO or order number must identify Quick Ship at the time of the order to ensure the proper ship date is assigned. Orders are for office systems only – individual components do not apply to Quick Ship Program.