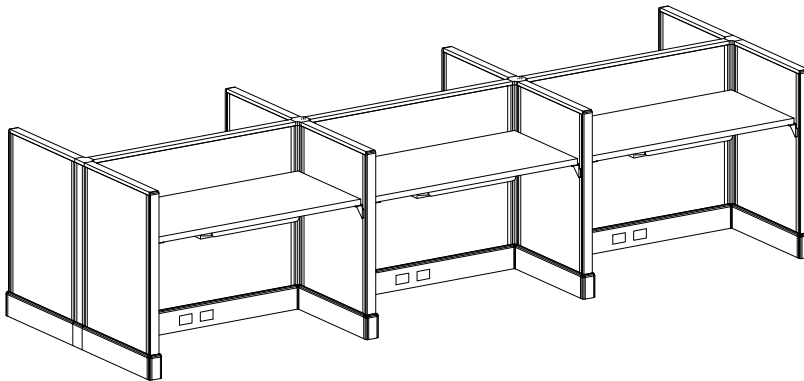


2X4 39H 6-PACK

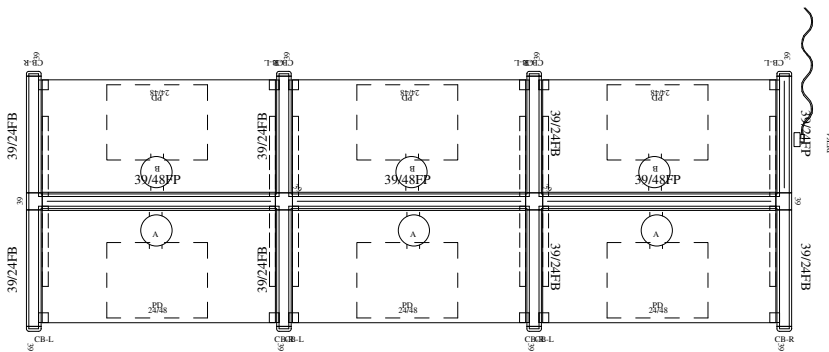
OPS2 PANEL SYSTEM TYPICAL



3D RENDERING



3D PLAN LAYOUT



2D PLAN LAYOUT

STATION SPECIFICATIONS

- OPS2 Panel System
- Monolithic panels
- 2' x 4' - 6-Pack
- 39" panel height
- Base feed power
- 1 power REC/station
- Power down the spine
- Pencil drawer

FINISHES



FABRIC
OPS Brown's Island



SURFACE & EDGE
White Nebula



PAINT
MT

PRICING

See next page for full BOM.

\$15,922.⁰⁰ **LIST TOTAL**

\$2,653.⁶⁷ **PRICE PER STATION**

Typical pricing is for reference only.
Pricing must be confirmed via official
Price Book or Customer Service.

2X4 39H 6-PACK

OPS2 PANEL SYSTEM TYPICAL



PRICING

Part Number	Part Description	Qty	List	Ext List
3WY39A2	39" - 3 WAY CONNECTOR	2	\$309.00	\$618.00
4WY39A2	39" - 4 WAY CONNECTOR	2	\$379.00	\$758.00
CRNRBR- LEFT	CORNER BRACKET (SPEC L OR R)	6	\$15.00	\$90.00
CRNRBR- RIGHT	CORNER BRACKET (SPEC L OR R)	6	\$15.00	\$90.00
EC39A2	39" END CAP	8	\$85.00	\$680.00
F3924	39 X 24 FABRIC PANEL - W/BASE	7	\$599.00	\$4,193.00
F3924P	39 X 24 FABRIC PANEL - POWERED	1	\$975.00	\$975.00
F3948P	39 X 48 FABRIC PANEL - POWERED	3	\$1,205.00	\$3,615.00
PDN	PENCIL DRAWER	6	\$145.00	\$870.00
PEK4 (L OR R)	4 CIR. BASE POWER ENTRY KIT	1	\$649.00	\$649.00
REC/A	A CIRCUIT DUPLEX RECEPTACLES	3	\$55.00	\$165.00
REC/B	B CIRCUIT DUPLEX RECEPTACLES	3	\$55.00	\$165.00
WS2448	24 X 48 WORK SURFACE	6	\$509.00	\$3,054.00

\$15,922.⁰⁰ **LIST TOTAL**

\$2,653.⁶⁷ **PRICE PER STATION**

Typical pricing is for reference only.
Pricing must be confirmed via official
Price Book or Customer Service.