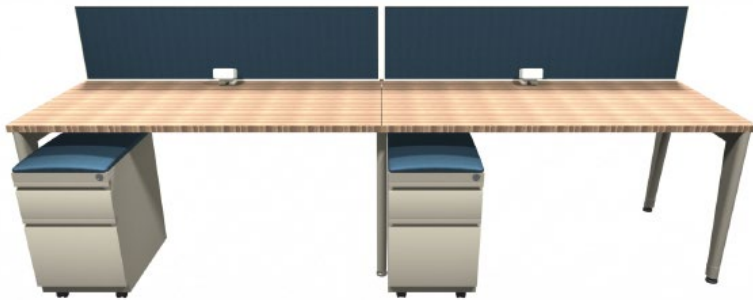
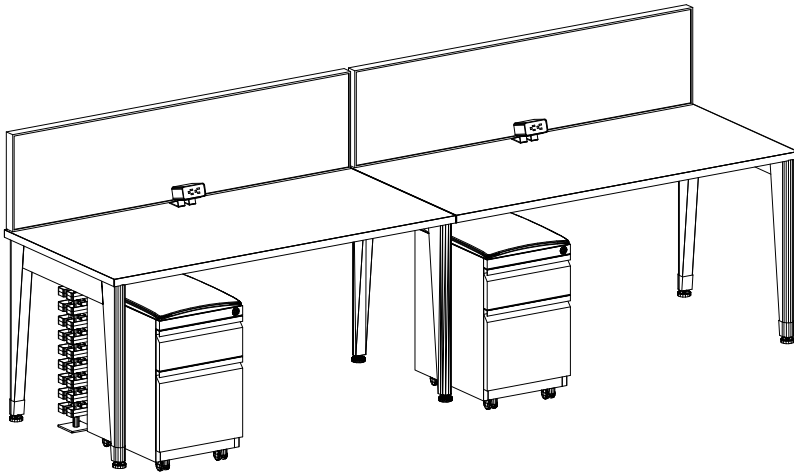


30X60 BENCHING 2-PACK

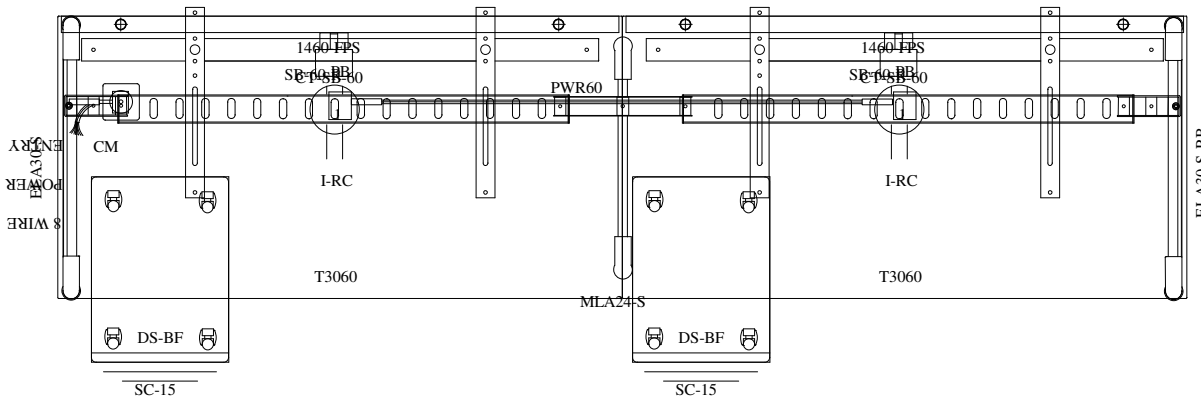
XPAND SYSTEM TYPICAL



3D RENDERING



3D PLAN LAYOUT

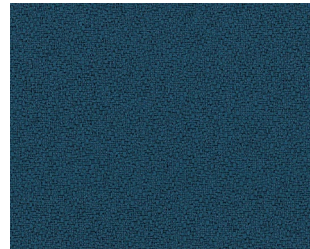


2D PLAN LAYOUT

STATION SPECIFICATIONS

- XPand System
- Reach Benching Single Stations
- 30"x60" - 4-Pack
- Fabric screens
- Desktop power duplex
- Tapered cast aluminum legs
- BF-FP mobile pedestal

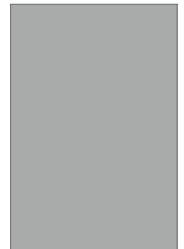
FINISHES



FABRIC
Anchorage Deep Water



SURFACE & EDGE
Buka Bark



PAINT
MS

PRICING

See next page for full BOM.

\$11,694.00 LIST TOTAL

\$5,847.00 PRICE PER STATION

Typical pricing is for reference only.
Pricing must be confirmed via official
Price Book or Customer Service.

30X60 BENCHING 2-PACK

XPAND SYSTEM TYPICAL



PRICING

Part Number	Part Description	Qty	List	Ext List
DS-BF-FP-M	Low Metal Mobile Box/File- Full Pull	2	\$1,145.00	\$2,290.00
DS-SC15	14.6"W Seat Cushion for Desking B/F Pedestal	2	\$175.00	\$350.00
XP-1460-TS-A	15" X 60" FABRIC SCREEN ASSEMBLY SQUARE EDGES	2	\$1,205.00	\$2,410.00
XP-CM-24	FLOOR ENTRY WIRE MANAGEMENT- BENCHING	1	\$209.00	\$209.00
XP-CT-SB-60	CABLE TRAY FOR SINGLE 60" BENCH	2	\$249.00	\$498.00
XP-DUPLEX-I-RC	DUPLEX / REAR CLAMP DESK MOUNT	2	\$269.00	\$538.00
XP-ELA30-R	CAST AL END LEG ASSEM SGL 30"	1	\$775.00	\$775.00
XP-ELA30-R	CAST AL END LEG ASSEM SGL 30"	1	\$775.00	\$775.00
XP-MLA24	CAST ALUM MID LEG ASSEMBLY - SINGLE	1	\$659.00	\$659.00
XP-PB-A	POWER BLOCK	2	\$95.00	\$190.00
XP-PE-8-WIRE	BASE ELECTRICAL POWER ENTRY FOUR CIRCUIT	1	\$545.00	\$545.00
XP-PWR60-A	8 WIRE POWER LINE JUMPER 60"	1	\$459.00	\$459.00
XP-SB-SINGLE-60	60" SINGLE WIDE STRETCHER BAR	2	\$399.00	\$798.00
XP-T3060	30" x 60" XPAND RECTANGULAR TOP - NO	2	\$599.00	\$1,198.00

\$11,694.00 LIST TOTAL

\$5,847.00 PRICE PER STATION

Typical pricing is for reference only.
Pricing must be confirmed via official
Price Book or Customer Service.