

DOGBONE SHAPE 6-PACK

OPS2 TILE SYSTEM TYPICAL

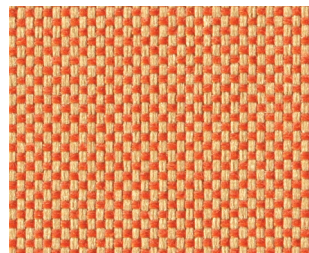


3D RENDERING

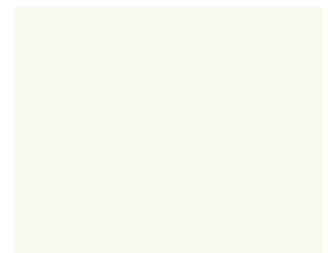
STATION SPECIFICATIONS

- OPS2 Tile System
- Dogbone shape - 6-pack
- 39", 53" panel heights
- 48" 120 degree corners
- BBF-FP storage pedestal
- Base feed power
- 2 REC/Station
- Power down spine & 1 wing

FINISHES



PANEL FABRIC Cape Cod Apricot



PAINT, EDGE & SURFACE
WF

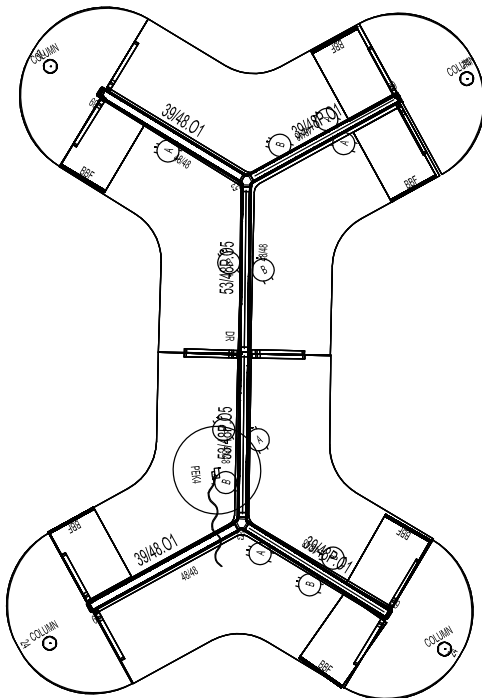
PRICING

See next page for full BOM.

\$31,900.⁰⁰ LIST TOTAL

\$5,316.⁶⁷ PRICE PER STATION

Typical pricing is for reference only.
Pricing must be confirmed via official
Price Book or Customer Service.



2D PLAN LAYOUT

DOGBONE SHAPE 6-PACK

OPS2 TILE SYSTEM TYPICAL



PRICING

Part Number	Part Description	Qty	List	Ext List
3WY53.120A2	53 - 3 Way 120 Degree Connector - w/ Base	2	\$509.00	\$1,018.00
BBF-FP	BOX/BOX/FILE PEDESTAL FULL PULL 23"D W/O TOP	4	\$995.00	\$3,980.00
BBF-FP	BOX/BOX/FILE PEDESTAL FULL PULL 23"D W/O TOP	2	\$995.00	\$1,990.00
CS4	4" COLUMN SUPPORT	4	\$319.00	\$1,276.00
CWS4848.120.90	48X48X24D, 120Deg W/90Deg Ends Corner Ws	6	\$1,215.00	\$7,290.00
DWS2652	DTOP 26 X 52 WORK SURFACE (NO BASE)	4	\$879.00	\$3,516.00
EC39A2	39" END CAP	4	\$85.00	\$340.00
PEK4 (L OR R)	4 CIR. BASE POWER ENTRY KIT	1	\$649.00	\$649.00
PTP48	48" PANEL TO PANEL CONNECTOR	1	\$39.00	\$39.00
REC/A	A CIRCUIT DUPLEX RECEPTACLES	6	\$55.00	\$330.00
REC/B	B CIRCUIT DUPLEX RECEPTACLES	6	\$55.00	\$330.00
TS39481814.01	Non-Powered Tile Frame 3948.18PP.14F	2	\$1,449.00	\$2,898.00
TS3948P1814.01	Powered Tile Frame 3948P.18PP.14F	2	\$1,739.00	\$3,478.00
TS5348P181414.05	Powered Tile Frame 5348P.18PP.14F.14G/OT	2	\$2,305.00	\$4,610.00
VHF	VARIABLE HEIGHT FILLER - PANEL TO CONNECTOR	4	\$39.00	\$156.00

\$31,900.⁰⁰ LIST TOTAL

\$5,316.⁶⁷ PRICE PER STATION

Typical pricing is for reference only.
Pricing must be confirmed via official
Price Book or Customer Service.