

**Assembly Time:**

Approximately 5 minutes

**Parts List:**

Remove the parts from the box and verify they are all there.



**STEP 1**

Use your shipping package as a work bench.

Lay the seat pan upside down on the shipping carton.



**STEP 2**

Lay the frame onto the seat pan in the provided groove.



**STEP 3**

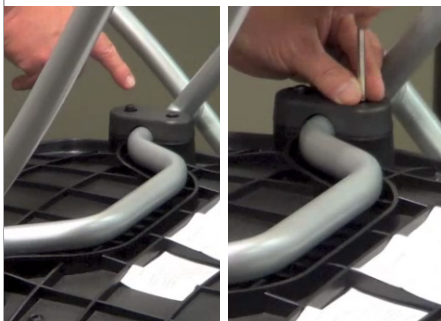
Place the plastic screw covers over the screw holes on either side of the seat frame.



**STEP 4 & 5**

Step 4: Place screws, with washers, into the screw holes.

Step 5: Tighten screws completely.



**STEP 6**

Attach the casters to the base by firmly pushing in.



**Maintenance and Attention:**

1. Make sure that the chair can only carry one person at a time.
2. Do not use the chair as a step stool or ladder.
3. Do not use the chair before all parts are properly assembled.
4. Do not use the chair unless all screws have been tightened.
5. If destroyed by outside forces or defect work, stop use of the chair until repaired.
6. For your safety, the instructions listed on this sheet must be strictly observed.